

The image shows three modern-style chairs with white seats and light-colored wooden frames. One chair is fully visible in the center-right, while two others are partially visible on the left side. The background is a solid black color.

Paqged

contract 2018

EDITION 2

Paged

what's new?

co nowego?

WRB[®] technology



Każdy uczestnik rynku HoReCa doceni fakt, że słońce, wiatr i wilgotność powietrza nie stanowią już problemu. Od teraz, goście mogą w pełni cieszyć się swoimi spotkaniami i imprezami w plenerze, nawet w przypadku niesprzyjających standardowym meblom warunków atmosferycznych. Nasza najnowsza innowacja – technologia WRB (drewna bukowego, odpornego na warunki pogodowe) pozwoli używać mebli w warunkach zewnętrznych, nawet w przedziale temperatur 5°C – 60°C.

Every participant in the HoReCa market will appreciate the fact that the sun, wind and humidity are no longer a problem. From now on, guests can fully enjoy their meetings and outdoor events, even in the case of unfavourable weather conditions. Our latest innovation – WRB technology (beech wood, resistant to weather conditions) will allow you to use furniture in outdoor conditions, even in the temperature range between 5°C – 60°C (41°F – 140°F).



Dostępna
we wszystkich
15 kolorach bejc > s. 80

*Available in all
15 stain colours > page 80*





ODPORNOŚĆ NA WILGOĆ I TEMPERATURY

testy w kabinie klimatycznej
ARALAB Laboratorium
Sherwin-Williams w Maersta
(Szwecja)

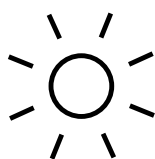


RESISTANCE TO MOISTURE AND TEMPERATURE

tests in the **ARALAB**
climate cabin Sherwin-
Williams laboratory in Marsta
(Sweden)

ODPORNOŚĆ NA PROMIENIE SŁONECZNE

testy powłoki
lakierniczej na działanie
promieniowania **UV**,
wykonane wg normy ISO
11507:2007



RESISTANCE TO SUNLIGHT

UV paint coating tests
performed according to ISO
11507: 2007

ODPORNOŚĆ NA ZASOLENIE

testy w komorze do
cyklicznych badań
korozyjnych, wykonane wg
normy ISO 9227:2012



RESISTANCE TO SALINITY

tests in the chamber for
cyclic corrosion tests, made
according to ISO 9227: 2012

Technologia WRB dostępna jest w meblach bukowych nietapicerowanych.

The WRB technology is available for beech furniture without upholstery.

Personalized prints

Nadruki personalizowane



Zastosowanie nadruków możliwe tylko dla krzeseł w wybarwieniu naturalnym. Personalizacja dostępna dla mebli z elementami ze sklejki.

Application of prints is only possible for chairs in a natural colour. Personalization available for furniture with plywood elements.

Nasze standardowe modele krzeseł mogą być użyte do komunikowania istotnych wartości marki. Jeśli jest coś ważnego – dlaczego by nie wydrukować stosownej informacji na siedzisku krzesła? Logo marki, hasła firmowe, zdjęcia nowych produktów – pozwólmy odbiorcom zauważyć komunikat!

Our standard chair models can be used to communicate important brand values. If there is something important – why not print the appropriate information on the chair seat? Brand logos, company slogans, photos of new products – let the recipients see the message!



Duocolor

Barwa jest jednym z najbardziej rozpoznawalnych elementów marki. Niesie z sobą określony ładunek emocjonalny i znaczeniowy. Właśnie dlatego oddajemy do Waszej dyspozycji aż 27 kolorów – chcemy mieć pewność, że zdołacie wyrazić swoją wyjątkowość oraz nawiązać do identyfikacji wizualnej marki.

Colour is one of the most recognizable elements of the brand. It conveys a specific emotional and semantic charge. That is why we give you up to 27 colours – we want to be sure that you can express your uniqueness and establish a visual identity for your brand.



Zastosowanie Duocolor możliwe tylko dla krzeseł w wybarwieniu naturalnym. Personalizacja dostępna dla mebli z elementami ze sklejki.

Application of duocolor is only possible for chairs in a natural colour. Personalization available for furniture with plywood elements.



Internal stripes

Paski wewnętrzne



Barwione na określony kolor arkusze sklejki pozwalają wzmocnić komunikację marki, kojarzoną z daną barwą oraz podkreślić ciekawą geometrię elementów krzesła.

Sheets of plywood dyed in specific colour allow to strengthen the brand's communication, associated with a given colour, and to emphasize the interesting geometry of the chair elements.



Embossing

Wytłoczenia

W niektórych sytuacjach warto zachować naturalną kolorystykę drewna. Wytłaczanie logo marki lub jej haseł bezpośrednio na powierzchni siedziska stanowi idealny kompromis pomiędzy efektywną komunikacją a zachowaniem naturalnego efektu wykończenia mebla. To także okazja dla firmy, by zaangażować zmysł dotyku.

In some situations it is worth keeping the natural colour of wood. Embossing of the brand's logo or its slogans directly on the seat's surface is an ideal compromise between effective communication and maintaining the natural finish effect of the furniture. It is also an opportunity for the company to involve the sense of touch in its communication.



LEGENDA

design projekt
beech buk
oak dąb
H wysokość
W szerokość
L długość
D głębokość
SH wysokość siedziska
AH wysokość podłokietników

seat siedzisko
back oparcie
veneer fornirowane
upholstered tapicerowane
laminated laminowane
caned wyplatane
solid z litego drewna

netto weight waga netto
box volume objętość kartonu
pcs per box ilość na karton
pcs per container ilość na kontener

stacking sztaplowane
pcs ilość sztuk

piping lamówka
buttons guziki
on special request na specjalne zamówienie



design



AIRES

Design Dario Polaco

beech
H 770 W 580 D 550 SH 465

SEAT upholstered	NETTO WEIGHT 7 kg
	BOX VOLUME 0,30
	PCS PER BOX 1 pcs
	PCS PER CONTAINER 152



ALDO A-1070

Design Jadwiga Husarska-Sobina,
Magdalena Paleczna

beech
H 830 W 490 D 540 SH 460

SEAT veneer	NETTO WEIGHT 4,3 kg
STACKING 3 pcs	BOX VOLUME 0,34
	PCS PER BOX 2 pcs
	PCS PER CONTAINER 288 pcs



ALDO H-1070

Design Jadwiga Husarska-Sobina,
Magdalena Paleczna

beech
H 1060 W 480 D 510 SH 780

SEAT veneer	NETTO WEIGHT 5,3 kg
	BOX VOLUME 0,32
	PCS PER BOX 1 pcs
	PCS PER CONTAINER 160 pcs



APRIL

Design Nikodem Szpunar

beech / oak
H 800 W 556 D 510 SH 470 AH 560

SEAT upholstered	NETTO WEIGHT 7 kg
	BOX VOLUME 0,26
	PCS PER BOX 1 pcs
	PCS PER CONTAINER 440



APRIL 2

Design Nikodem Szpunar

beech / oak
H 800 W 556 D 510 SH 470 AH 560

SEAT upholstered	NETTO WEIGHT 7 kg
	BOX VOLUME 0,26
	PCS PER BOX 1 pcs
	PCS PER CONTAINER 440



APRIL 3

Design Nikodem Szpunar
Metal base Tomasz Paszko

beech / oak
H 815 W 556 D 510 SH 470 AH 560

SEAT upholstered	NETTO WEIGHT 7 kg
	BOX VOLUME 0,26
	PCS PER BOX 1 pcs
	PCS PER CONTAINER 440



APRIL 4

Design Nikodem Szpunar

beech / oak
H 790 W 556 D 535 SH 455 AH 545

SEAT upholstered	NETTO WEIGHT 9 kg
	BOX VOLUME 0,26
	PCS PER BOX 1 pcs
	PCS PER CONTAINER 440



APRIL 5

Design Nikodem Szpunar

beech / oak
H 810-920 W 635 D 635
SH 470-580 AH 560-670

SEAT upholstered	NETTO WEIGHT 9 kg
	BOX VOLUME 0,26
	PCS PER BOX 1 pcs
	PCS PER CONTAINER 440



ARGO

Design Jadwiga Husarska-Sobina, Klaudia Kasprzak

beech / oak
H 810 W 540 D 550 SH 480 AH 740

SEAT upholstered	NETTO WEIGHT 7 kg
	BOX VOLUME 0,27
	PCS PER BOX 1 pcs
	PCS PER CONTAINER 210



BENKO A-8130

Design Tomek Rygalik / Studio Rygalik

beech
H 805 W 445 D 540 SH 460

SEAT veneer upholstered caned	NETTO WEIGHT 3 kg
	BOX VOLUME 0,28
	PCS PER BOX 2 pcs
	PCS PER CONTAINER 372 pcs



BENKO B-8130

Design Tomek Rygalik / Studio Rygalik

beech
H 805 W 615 D 530 SH 460 AH 660

SEAT veneer upholstered caned	NETTO WEIGHT 6 kg
	BOX VOLUME 0,33
	PCS PER BOX 1 pcs
	PCS PER CONTAINER 140 pcs



CORTE A-4311

Design Grzegorz Gancarczyk

beech
H 780 W 430 D 490 SH 460

SEAT veneer	NETTO WEIGHT 4,5 kg
STACKING 3 pcs	BOX VOLUME 0,31
	PCS PER BOX 2 pcs
	PCS PER CONTAINER 372 pcs



CORTE H-4311

Design Grzegorz Gancarczyk

beech
H 1000 W 400 D 455 SH 780

SEAT veneer	NETTO WEIGHT 5 kg
	BOX VOLUME 0,35
	PCS PER BOX 1 pcs
	PCS PER CONTAINER 160 pcs



CORTE A-4312

Design Grzegorz Gancarczyk

beech
H 775 W 430 D 490 SH 460

SEAT veneer	NETTO WEIGHT 4,5 kg
STACKING 3 pcs	BOX VOLUME 0,31
	PCS PER BOX 2 pcs
	PCS PER CONTAINER 372 pcs



CORTE H-4312

Design Grzegorz Gancarczyk

beech
H 1000 W 400 D 455 SH 780

SEAT veneer	NETTO WEIGHT 5 kg
	BOX VOLUME 0,35
	PCS PER BOX 1 pcs
	PCS PER CONTAINER 160 pcs



CORTE A-4313

Design Grzegorz Gancarczyk

beech
H 780 W 430 D 490 SH 460

SEAT veneer	NETTO WEIGHT 4,5 kg
STACKING 3 pcs	BOX VOLUME 0,31
	PCS PER BOX 2 pcs
	PCS PER CONTAINER 372 pcs



CORTE H-4313

Design Grzegorz Gancarczyk

beech

H 1000 W 400 D 455 SH 780

SEAT	NETTO WEIGHT
veneer	5 kg
	BOX VOLUME
	0,35
	PCS PER BOX
	1 pcs
	PCS PER CONTAINER
	160 pcs



DOT

Design Nikodem Szpunar

beech / oak

H 840 W 460 D 560 SH 480

SEAT	NETTO WEIGHT
upholstered	5 kg
	BOX VOLUME
	0,36
	PCS PER BOX
	2 pcs
	PCS PER CONTAINER
	136 pcs



A-DUB

Design Tomek Rygalik / Studio Rygalik

oak

H 900 W 450 D 600 SH 470

SEAT	NETTO WEIGHT
upholstered	8 kg
	BOX VOLUME
	0,36
	PCS PER BOX
	2 pcs
	PCS PER CONTAINER
	160 pcs



B-DUB

Design Tomek Rygalik / Studio Rygalik

oak

H 900 W 620 D 620 SH 470 AH 645

SEAT	NETTO WEIGHT
upholstered	10 kg
	BOX VOLUME
	0,38
	PCS PER BOX
	1 pcs
	PCS PER CONTAINER
	150 pcs



M-DUB

Design Tomek Rygalik / Studio Rygalik

oak
H 780 W 620 D 620 SH 420 AH 560

SEAT upholstered	NETTO WEIGHT 10 kg
	BOX VOLUME 0,33
	PCS PER BOX 1 pcs
	PCS PER CONTAINER 170 pcs



COFFEE TABLE-DUB

Design Tomek Rygalik / Studio Rygalik

oak
H 380 W 600 L 600

NETTO WEIGHT 9 kg
BOX VOLUME 0,16
PCS PER CONTAINER 360 pcs



EVO B-2940

Design Agnieszka Pikus

beech / oak
H 775 W 580 D 540 SH 460 AH 640

SEAT veneer	NETTO WEIGHT 4 kg
	BOX VOLUME 0,33
	PCS PER BOX 1 pcs
	PCS PER CONTAINER 140 pcs



EVO B-2945

beech / oak
H 790 W 600 D 560 SH 500 AH 640

SEAT upholstered	NETTO WEIGHT 5,2 kg
	BOX VOLUME 0,33
	PCS PER BOX 1 pcs
	PCS PER CONTAINER 140 pcs



EVO B-2944

beech / oak
H 790 W 580 D 550 SH 500 AH 640

SEAT upholstered veneer	NETTO WEIGHT 4,5 kg
BACK upholstered	BOX VOLUME 0,33
	PCS PER BOX 1 pcs
	PCS PER CONTAINER 140 pcs



EVO H-2940

Design Agnieszka Pikus

beech / oak
H 950 W 570 D 560 SH 760 AH 820

SEAT veneer	NETTO WEIGHT 5,7 kg
	BOX VOLUME 0,41
	PCS PER BOX 1 pcs
	PCS PER CONTAINER 120 pcs



M-FUM

Design Tomek Rygalik / Studio Rygalik

beech / oak
H 690 W 715 D 670 SH 400

SEAT upholstered	NETTO WEIGHT 13 kg
	BOX VOLUME 0,37
	PCS PER BOX 1 pcs
	PCS PER CONTAINER 150 pcs



B-FUM 1

Design Tomek Rygalik / Studio Rygalik

beech / oak
H 810 W 715 D 670 SH 465

SEAT upholstered	NETTO WEIGHT 13 kg
	BOX VOLUME 0,44
	PCS PER BOX 1 pcs
	PCS PER CONTAINER 130 pcs



B-FUM 2

Design Tomek Rygalik / Studio Rygalik

beech / oak
H 810 W 715 D 670 SH 465

SEAT upholstered	NETTO WEIGHT 15 kg
	BOX VOLUME 0,44
	PCS PER BOX 1 pcs
	PCS PER CONTAINER 130 pcs



HIP A-3701

Design Nikodem Szpunar

beech / oak
H 800 W 500 D 510 SH 445

SEAT veneer	NETTO WEIGHT 6 kg
STACKING 3 pcs	BOX VOLUME 0,31
	PCS PER BOX 2 pcs
	PCS PER CONTAINER 370 pcs



HIP B-3701

Design Nikodem Szpunar

beech / oak
H 800 W 580 D 510 SH 445 AH 660

SEAT veneer	NETTO WEIGHT 7 kg
STACKING 3 pcs	BOX VOLUME 0,26
	PCS PER BOX 1 pcs
	PCS PER CONTAINER 220 pcs



HIP A-3702

Design Nikodem Szpunar

beech / oak
H 800 W 500 D 510 SH 480

SEAT upholstered	NETTO WEIGHT 7 kg
	BOX VOLUME 0,37
	PCS PER BOX 2 pcs
	PCS PER CONTAINER 310 pcs



HIP B-3702

Design Nikodem Szpunar

beech / oak

H 800 W 580 D 507 SH 480 AH 660

SEAT
upholstered

NETTO WEIGHT
8 kg

BOX VOLUME
0,26

PCS PER BOX
1 pcs

PCS PER CONTAINER
220 pcs



ICHO A-4420

Design Nikodem Szpunar

beech

H 820 W 515 D 460 SH 470

SEAT
veneer

NETTO WEIGHT
4,5 kg

BOX VOLUME
0,33

STACKING
6 pcs

PCS PER BOX
2 pcs

PCS PER CONTAINER
280 pcs



ICHO A-4420

Design Nikodem Szpunar

beech

H 820 W 515 D 460 SH 500

SEAT
upholstered

NETTO WEIGHT
5 kg

BOX VOLUME
0,4

STACKING
6 pcs

PCS PER BOX
2 pcs

PCS PER CONTAINER
244 pcs



ICHO TROLLEY

H 820 W 550 D 820

NETTO WEIGHT
28 kg

BOX VOLUME
0,51

PCS PER BOX
1 pcs



K2 A-2220

Design Tomek Rygalik / Studio Rygalik

beech / oak
H 980 W 440 D 520 SH 510

SEAT upholstered	NETTO WEIGHT 7,4 kg
	BOX VOLUME 0,41
	PCS PER BOX 2 pcs
	PCS PER CONTAINER 288 pcs



K2 B-2220

Design Tomek Rygalik / Studio Rygalik

beech / oak
H 730 W 585 D 670 SH 480

SEAT upholstered	NETTO WEIGHT 12 kg
	BOX VOLUME 0,37
	PCS PER BOX 1 pcs
	PCS PER CONTAINER 153 pcs



K2 C-2225

Design Tomek Rygalik / Studio Rygalik

beech / oak
H 480 W 620

SEAT upholstered	NETTO WEIGHT 7,8 kg
	BOX VOLUME 0,37
	PCS PER BOX 1 pcs
	PCS PER CONTAINER 153 pcs



K2 C-2220

Design Tomek Rygalik / Studio Rygalik

beech / oak
H 480 W 670

SEAT upholstered	NETTO WEIGHT 7,8 kg
	BOX VOLUME 0,37
	PCS PER BOX 1 pcs
	PCS PER CONTAINER 153 pcs



K2 H-2220

Design Tomek Rygalik / Studio Rygalik

beech / oak

H 835 W 440 D 465 SH 750

SEAT
upholstered

NETTO WEIGHT
7 kg

BOX VOLUME
0,28

PCS PER BOX
1 pcs

PCS PER CONTAINER
186 pcs



K2 S-2220

Design Tomek Rygalik / Studio Rygalik

beech / oak

H 740 W 750 L 750

NETTO WEIGHT
14 kg

BOX VOLUME
0,24

PCS PER CONTAINER
240



K2 S-2221

Design Tomek Rygalik / Studio Rygalik

beech / oak

H 350 W 750

NETTO WEIGHT
10 kg

BOX VOLUME
0,24

PCS PER CONTAINER
240



K3 A-5035

Design Tomek Rygalik / Studio Rygalik

beech / oak

H 850 W 480 D 535 SH 480

SEAT
upholstered

NETTO WEIGHT
6,5 kg

BOX VOLUME
0,34

PCS PER BOX
2 pcs

PCS PER CONTAINER
288 pcs



LINK A-2120

Design Jan Lewczuk

beech

H 835 W 500 D 540 SH 460

SEAT
veneer
upholstered
STACKING
3 pcs

NETTO WEIGHT
7 kg
BOX VOLUME
0,34
PCS PER BOX
2 pcs
PCS PER CONTAINER
340 pcs



LINK A-2120

Design Jan Lewczuk

beech

H 835 W 500 D 540 SH 480

SEAT
veneer
upholstered
STACKING
3 pcs

NETTO WEIGHT
7 kg
BOX VOLUME
0,34
PCS PER BOX
2 pcs
PCS PER CONTAINER
340 pcs



LINK B-2120

Design Jan Lewczuk

beech

H 835 W 500 D 540 SH 460 AH 660

SEAT
veneer
upholstered
STACKING
3 pcs

NETTO WEIGHT
7 kg
BOX VOLUME
0,25
PCS PER BOX
1 pcs
PCS PER CONTAINER
230 pcs



LOF A-4230

Design Tomek Rygalik / Studio Rygalik

beech / oak

H 820 W 465 D 545 SH 480

SEAT
veneer
upholstered

NETTO WEIGHT
6 kg
BOX VOLUME
0,37
PCS PER BOX
2 pcs
PCS PER CONTAINER
288 pcs



LOF A-4231

Design Tomek Rygalik / Studio Rygalik

beech / oak

H 820 W 490 D 545 SH 460

SEAT

veneer
upholstered
laminated

NETTO WEIGHT
6 kg

BOX VOLUME
0,34

BACK

laminated

PCS PER BOX
2 pcs

PCS PER CONTAINER
288 pcs



LOF A-4232

Design Tomek Rygalik / Studio Rygalik

beech / oak

H 820 W 490 D 545 SH 460

SEAT

veneer
upholstered
laminated

NETTO WEIGHT
6 kg

BOX VOLUME
0,34

BACK

laminated

PCS PER BOX
2 pcs

PCS PER CONTAINER
288 pcs



LOF A-4238

Design Tomek Rygalik / Studio Rygalik

beech / oak

H 820 W 490 D 545 SH 460

SEAT

veneer
upholstered

NETTO WEIGHT
6 kg

BOX VOLUME
0,34

PCS PER BOX
2 pcs

PCS PER CONTAINER
288 pcs



LOF A-4239

Design Tomek Rygalik / Studio Rygalik

beech / oak

H 820 W 465 D 545 SH 460

SEAT

veneer

NETTO WEIGHT
6,5 kg

BOX VOLUME
0,34

PCS PER BOX
2 pcs

PCS PER CONTAINER
288 pcs



LOF A-4281

Design Tomek Rygalik / Studio Rygalik

beech / oak
H 820 W 440 D 545 SH 460

SEAT veneer upholstered laminated	NETTO WEIGHT 6 kg
BACK laminated	BOX VOLUME 0,34
	PCS PER BOX 2 pcs
	PCS PER CONTAINER 288 pcs



LOF A-4282

Design Tomek Rygalik / Studio Rygalik

beech / oak
H 820 W 440 D 545 SH 480

SEAT upholstered	NETTO WEIGHT 6,5 kg
	BOX VOLUME 0,34
	PCS PER BOX 2 pcs
	PCS PER CONTAINER 288 pcs



LOF S-4230

Design Tomek Rygalik / Studio Rygalik

beech / oak
H 750 W 800 L 800

NETTO WEIGHT 17 kg
BOX VOLUME 0,09
PCS PER CONTAINER 580 pcs



LOREM

Design Nikodem Szpunar

beech / oak
H 850 W 460 D 513 SH 465

SEAT upholstered	NETTO WEIGHT 5 kg
	BOX VOLUME 0,30
	PCS PER BOX 2 pcs
	PCS PER CONTAINER 380 pcs



LOREM

Design Nikodem Szpunar

beech / oak
H 760 W 850 L 1250/1850

NETTO WEIGHT
44 kg
BOX VOLUME
0,19
PCS PER CONTAINER
300 pcs



LUBI B-5005

Design Tomek Rygalik / Studio Rygalik

beech / oak
H 805 W 560 D 540 SH 480

SEAT
upholstered
NETTO WEIGHT
4,5 kg
BOX VOLUME
0,33
PCS PER BOX
1 pcs
PCS PER CONTAINER
140 pcs



LUBI H-5005

Design Tomek Rygalik / Studio Rygalik

beech / oak
H 885 W 480 D 460 SH 760

SEAT
upholstered
NETTO WEIGHT
6,8 kg
BOX VOLUME
0,34
PCS PER BOX
1 pcs
PCS PER CONTAINER
144 pcs



A-MODU

Design Husarska Design Studio, Anna Sanetra

beech / oak
H 880 W 450 D 580 SH 490

SEAT
upholstered
NETTO WEIGHT
9 kg
BOX VOLUME
0,27
PCS PER BOX
1 pcs
PCS PER CONTAINER
210 pcs



B-MODU L

Design Husarska Design Studio, Anna Sanetra

beech / oak

H 880 W 570 D 580 SH 490

SEAT
upholstered

NETTO WEIGHT
13 kg

BOX VOLUME
0,33

PCS PER BOX
1 pcs

PCS PER CONTAINER
170 pcs



B-MODU P

Design Husarska Design Studio, Anna Sanetra

beech / oak

H 880 W 570 D 580 SH 490

SEAT
upholstered

NETTO WEIGHT
13 kg

BOX VOLUME
0,33

PCS PER BOX
1 pcs

PCS PER CONTAINER
170 pcs



B-MODU

Design Husarska Design Studio, Anna Sanetra

beech / oak

H 880 W 720 D 580 SH 490 AH 745

SEAT
upholstered

NETTO WEIGHT
14 kg

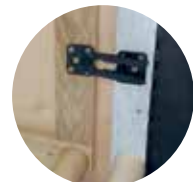
BOX VOLUME
0,42

PCS PER BOX
1 pcs

PCS PER CONTAINER
130 pcs



connector



self-assembly legs





S-K MODU

Design Husarska Design Studio, Anna Sanetra

beech / oak
H 445 W 505 L 505

NETTO WEIGHT
7 kg
BOX VOLUME
0,03
PCS PER BOX
1 pcs
PCS PER CONTAINER
1900 pcs



PROP A-4390

Design Nikodem Szpunar

beech / oak
H 825 W 445 D 570 SH 465

SEAT
veneer
upholstered
NETTO WEIGHT
5,2 kg
BOX VOLUME
0,37
PCS PER BOX
2 pcs
PCS PER CONTAINER
372 pcs



PROP A-4395

Design Nikodem Szpunar

beech / oak
H 825 W 445 D 570 SH 500

SEAT
upholstered
NETTO WEIGHT
6 kg
BOX VOLUME
0,37
PCS PER BOX
2 pcs
PCS PER CONTAINER
372 pcs



PROP B-4390

Design Nikodem Szpunar

beech / oak
H 825 W 600 D 585 SH 465 AH 670

SEAT
veneer
upholstered
NETTO WEIGHT
6,8 kg
BOX VOLUME
0,36
PCS PER BOX
1 pcs
PCS PER CONTAINER
140 pcs



PROP B-4395

Design Nikodem Szpunar

beech / oak

H 825 W 600 D 585 SH 500 AH 670

SEAT
upholstered

NETTO WEIGHT
7,9 kg

BOX VOLUME
0,36

PCS PER BOX
1 pcs

PCS PER CONTAINER
140 pcs



PROP B-4398

Design Nikodem Szpunar

beech / oak

H 825 W 600 D 585 SH 500 AH 695

SEAT
upholstered

NETTO WEIGHT
7,9 kg

BOX VOLUME
0,36

PCS PER BOX
1 pcs

PCS PER CONTAINER
140 pcs



PROP C-4390

Design Nikodem Szpunar

beech / oak

H 780 W 505 D 460 SH 780

SEAT
veneer
upholstered

NETTO WEIGHT
5,7 kg

BOX VOLUME
0,27

PCS PER BOX
1 pcs

PCS PER CONTAINER
147 pcs



PROP H-4390

Design Nikodem Szpunar

beech / oak

H 1020 W 515 D 495 SH 785

SEAT
veneer
upholstered

NETTO WEIGHT
6,8 kg

BOX VOLUME
0,35

PCS PER BOX
1 pcs

PCS PER CONTAINER
160 pcs



PROP 80X80

Design Nikodem Szpunar

beech / oak
H 750 W 800 D 800

NETTO WEIGHT
18 kg

BOX VOLUME
0,08

PCS PER CONTAINER
725 pcs



PROP FI 80

Design Nikodem Szpunar

beech / oak
H 750 W 800 D 800

NETTO WEIGHT
15 kg

BOX VOLUME
0,08

PCS PER CONTAINER
725 pcs



PROP FI 60

Design Nikodem Szpunar

beech / oak
H 500 W 600 D 600

NETTO WEIGHT
9 kg

BOX VOLUME
0,05

PCS PER CONTAINER
1160 pcs



SEN B-3210

Design Tomek Rygalik / Studio Rygalik

beech / oak
H 830 W 700 D 610 SH 450 AH 630

SEAT
upholstered

NETTO WEIGHT
12 kg

BOX VOLUME
0,39

PCS PER BOX
1 pcs

PCS PER CONTAINER
140 pcs



SUDOKU B-9820

Design Grzegorz Gancarczyk

beech

H 745 W 510 D 490 SH 460 AH 655

SEAT
veneer

NETTO WEIGHT
4,5 kg

BOX VOLUME
0,27

PCS PER BOX
1 pcs

PCS PER CONTAINER
147 pcs



SUDOKU H-9820

Design Grzegorz Gancarczyk

beech

H 990 W 520 D 485 SH 780 AH 920

SEAT
veneer

NETTO WEIGHT
5,5 kg

BOX VOLUME
0,35

PCS PER BOX
1 pcs

PCS PER CONTAINER
160 pcs



SWAN A-8280

Design Grzegorz Gancarczyk

beech

H 825 W 470 D 570 SH 480

SEAT
upholstered

NETTO WEIGHT
4,5 kg

STACKING
3 pcs

BOX VOLUME
0,37

PCS PER BOX
2 pcs

PCS PER CONTAINER
288 pcs



SWAN B-8280

Design Grzegorz Gancarczyk

beech

H 825 W 580 D 570 SH 480

SEAT
upholstered

NETTO WEIGHT
5,3 kg

STACKING
3 pcs

BOX VOLUME
0,17

PCS PER BOX
1 pcs

PCS PER CONTAINER
36



TOLO A-2160

Design Tomek Rygalik / Studio Rygalik

beech / oak

H 815 W 550 D 490 SH 460

SEAT
veneer

NETTO WEIGHT
4,8 kg

STACKING
3 pcs

BOX VOLUME
0,40

PCS PER BOX
2 pcs

PCS PER CONTAINER
244 pcs



TOLO A-2160 (UPH)

Design Tomek Rygalik / Studio Rygalik

beech / oak

H 795 W 550 D 490 SH 480

SEAT
upholstered

NETTO WEIGHT
5,3 kg

STACKING
3 pcs

BOX VOLUME
0,40

PCS PER BOX
2 pcs

PCS PER CONTAINER
244 pcs



TOLO H-2160

Design Tomek Rygalik / Studio Rygalik

beech / oak

H 1060 W 570 D 455 SH 790

SEAT
veneer
upholstered

NETTO WEIGHT
6,5 kg

BOX VOLUME
0,41

PCS PER BOX
1 pcs

PCS PER CONTAINER
120 pcs



TOLO H-2160

Design Tomek Rygalik / Studio Rygalik

beech / oak

H 1060 W 570 D 455 SH 820

SEAT
veneer
upholstered

NETTO WEIGHT
7 kg

BOX VOLUME
0,41

PCS PER BOX
1 pcs

PCS PER CONTAINER
120 pcs



TUK

Design Nikodem Szpunar

beech / oak
H 830 W 560 D 550 SH 480 AH 660

SEAT upholstered	NETTO WEIGHT 8 kg
	BOX VOLUME 0,30
	PCS PER BOX 1 pcs
	PCS PER CONTAINER 152



TUK 2

Design Nikodem Szpunar

beech / oak
H 830 W 560 D 550 SH 480 AH 660

SEAT upholstered	NETTO WEIGHT 8 kg
	BOX VOLUME 0,30
	PCS PER BOX 1 pcs
	PCS PER CONTAINER 152



TUK 3

Design Nikodem Szpunar
 Metal base Tomasz Paszko

beech / oak
H 825 W 560 D 550 SH 480 AH 660

SEAT upholstered	NETTO WEIGHT 8 kg
	BOX VOLUME 0,30
	PCS PER BOX 1 pcs
	PCS PER CONTAINER 152



TUK 4

Design Nikodem Szpunar

beech / oak
H 810 W 560 D 550 SH 440 AH 620

SEAT upholstered	NETTO WEIGHT 10 kg
	BOX VOLUME 0,30
	PCS PER BOX 1 pcs
	PCS PER CONTAINER 152



TUK 5

Design Nikodem Szpunar

beech / oak

H 825-935 W 580 D 600
SH 445-565 AH 636-745

SEAT upholstered	NETTO WEIGHT 10 kg
	BOX VOLUME 0,35
	PCS PER BOX 1 pcs
	PCS PER CONTAINER 152



BIG TUK

Design Nikodem Szpunar

beech / oak

H 895 W 640 D 570 SH 480 AH 740

SEAT upholstered	NETTO WEIGHT 9 kg
	BOX VOLUME 0,35
	PCS PER BOX 1 pcs
	PCS PER CONTAINER 120



BIG TUK 4

Design Nikodem Szpunar

beech / oak

H 895 W 640 D 570 SH 440 AH 700

SEAT upholstered	NETTO WEIGHT 10 kg
	BOX VOLUME 0,35
	PCS PER BOX 1 pcs
	PCS PER CONTAINER 120



BIG TUK 5

Design Nikodem Szpunar

beech / oak

H 895 W 640 D 570 SH 440 AH 700

SEAT upholstered	NETTO WEIGHT 10 kg
	BOX VOLUME 0,35
	PCS PER BOX 1 pcs
	PCS PER CONTAINER 120



UXI A-2920

Design Tomek Rygalik / Studio Rygalik

beech

H 770 W 450 D 510 SH 480

SEAT
upholstered

NETTO WEIGHT
5,5 kg

STACKING
3 pcs

BOX VOLUME
0,34

PCS PER BOX
2 pcs

PCS PER CONTAINER
288 pcs



UXI B-2920

Design Tomek Rygalik / Studio Rygalik

beech

H 770 W 530 D 530 SH 480 AH 715

SEAT
upholstered

NETTO WEIGHT
8 kg

STACKING
3 pcs

BOX VOLUME
0,25

PCS PER BOX
1 pcs

PCS PER CONTAINER
147 pcs



UXI H-2920

Design Tomek Rygalik / Studio Rygalik

beech

H 1080 W 530 D 560 SH 790

SEAT
upholstered

NETTO WEIGHT
6,8 kg

STACKING
2 pcs

BOX VOLUME
0,41

PCS PER BOX
1 pcs

PCS PER CONTAINER
120 pcs



B-ZAP 1

Design Tomek Rygalik / Studio Rygalik

beech / oak

H 845 W 600 D 560 SH 450 AH 650

SEAT
upholstered

NETTO WEIGHT
12 kg

BOX VOLUME
0,33

PCS PER BOX
1 pcs

PCS PER CONTAINER
170 pcs



B-ZAP 2

Design Tomek Rygalik / Studio Rygalik

beech / oak

H 850 W 600 D 560 SH 450 AH 650

SEAT
upholstered

NETTO WEIGHT
12 kg

BOX VOLUME
0,33

PCS PER BOX
1 pcs

PCS PER CONTAINER
170 pcs



H-ZAP

Design Tomek Rygalik / Studio Rygalik

beech / oak

H 1180 W 600 D 560 SH 780 AH 980

SEAT
upholstered

NETTO WEIGHT
15 kg

BOX VOLUME
0,46

PCS PER BOX
1 pcs

PCS PER CONTAINER
120 pcs



classic



B-1830

beech
H 800 W 600 D 580 SH 480 AH 680

SEAT upholstered	NETTO WEIGHT 5,3 kg
BACK upholstered	BOX VOLUME 0,33
	PCS PER BOX 1 pcs
	PCS PER CONTAINER 140 pcs



B-1834

beech
H 830 W 600 D 580 SH 460 AH 700

SEAT veneer	NETTO WEIGHT 4,8 kg
BACK upholstered	BOX VOLUME 0,33
	PCS PER BOX 1 pcs
	PCS PER CONTAINER 140 pcs



B-1834

beech
H 810 W 600 D 580 SH 480 AH 680

SEAT upholstered	NETTO WEIGHT 5,2 kg
BACK upholstered	BOX VOLUME 0,33
	PCS PER BOX 1 pcs
	PCS PER CONTAINER 140 pcs



B-1840

beech
H 800 W 600 D 580 SH 480 AH 680

SEAT upholstered	NETTO WEIGHT 4,8 kg
	BOX VOLUME 0,33
	PCS PER BOX 1 pcs
	PCS PER CONTAINER 140 pcs



A-1840

beech
H 880 W 420 D 530 SH 460

SEAT
veneer
upholstered
caned

NETTO WEIGHT
3,1 kg
BOX VOLUME
0,31
PCS PER BOX
2 pcs
PCS PER CONTAINER
372 pcs



B-1840

beech
H 820 W 600 D 580 SH 460 AH 700

SEAT
veneer

NETTO WEIGHT
4,3 kg
BOX VOLUME
0,33
PCS PER BOX
1 pcs
PCS PER CONTAINER
140 pcs



H-1840

beech
H 1090 W 440 D 540 SH 780

SEAT
veneer
upholstered
caned

NETTO WEIGHT
4,7 kg
BOX VOLUME
0,35
PCS PER BOX
1 pcs
PCS PER CONTAINER
160 pcs





A-1845

beech

H 880 W 410 D 560 SH 460

SEAT
vener
upholstered

STACKING
3 pcs

NETTO WEIGHT
3,1 kg

BOX VOLUME
0,31

PCS PER BOX
2 pcs

PCS PER CONTAINER
372 pcs



A-1880

beech

H 880 W 420 D 530 SH 460

SEAT
vener
upholstered
caned

NETTO WEIGHT
3,1 kg

BOX VOLUME
0,31

PCS PER BOX
2 pcs

PCS PER CONTAINER
372 pcs



B-1890

beech

H 820 W 600 D 580 SH 460

SEAT
vener

NETTO WEIGHT
4,6 kg

BOX VOLUME
0,33

PCS PER BOX
1 pcs

PCS PER CONTAINER
140 pcs



A-8110

beech
H 805 W 445 D 530 SH 460

SEAT upholstered caned	NETTO WEIGHT 3,0 kg BOX VOLUME 0,31 PCS PER BOX 2 pcs PCS PER CONTAINER 372 pcs
-------------------------------------	--



B-8110

beech
H 805 W 505 D 530 SH 460 AH 700

SEAT upholstered caned	NETTO WEIGHT 5,5 kg BOX VOLUME 0,36 PCS PER BOX 1 pcs PCS PER CONTAINER 140 pcs
-------------------------------------	--



H-8110

beech
H 1085 W 410 D 500 SH 750

SEAT upholstered caned	NETTO WEIGHT 5 kg BOX VOLUME 0,35 PCS PER BOX 1 pcs PCS PER CONTAINER 160 pcs
-------------------------------------	--



B-8250

beech
H 1020 W 535 D 1010 SH 520 AH 650

SEAT caned	NETTO WEIGHT 9,6 kg BOX VOLUME 0,10 PCS PER BOX 1 pcs PCS PER CONTAINER 720 pcs
----------------------	--



A-8291

beech
H 820 W 445 D 510 SH 460

SEAT veneer upholstered	NETTO WEIGHT 3,7 kg BOX VOLUME 0,31 PCS PER BOX 2 pcs PCS PER CONTAINER 372 pcs
--------------------------------------	--



B-8291

beech
H 820 W 500 D 510 SH 460 AH 680

SEAT veneer upholstered	NETTO WEIGHT 4,2 kg BOX VOLUME 0,36 PCS PER BOX 1 pcs PCS PER CONTAINER 140 pcs
--------------------------------------	--



B-8292

beech
H 820 W 500 D 510 SH 460 AH 680

SEAT veneer upholstered	NETTO WEIGHT 4,2 kg BOX VOLUME 0,36 PCS PER BOX 1 pcs PCS PER CONTAINER 140 pcs
--------------------------------------	--



H-8291

beech
H 1060 W 460 D 525 SH 750

SEAT veneer upholstered	NETTO WEIGHT 4,8 kg BOX VOLUME 0,35 PCS PER BOX 1 pcs PCS PER CONTAINER 160 pcs
--------------------------------------	--



A-5172

beech
H 790 W 440 D 490 SH 460

SEAT vener upholstered	NETTO WEIGHT 3,8 kg
	BOX VOLUME 0,31
	PCS PER BOX 2 pcs
	PCS PER CONTAINER 372 pcs



B-5172

beech
H 790 W 540 D 485 SH 460 AH 740

SEAT vener upholstered	NETTO WEIGHT 4,3 kg
	BOX VOLUME 0,37
	PCS PER BOX 2 pcs
	PCS PER CONTAINER 288 pcs



B-5182

beech
H 825 W 550 D 520 SH 460 AH 740

SEAT vener upholstered	NETTO WEIGHT 4,7 kg
	BOX VOLUME 0,36
	PCS PER BOX 2 pcs
	PCS PER CONTAINER 280 pcs



H-5172

beech
H 1140 W 540 D 480 SH 800 AH 1090

SEAT vener upholstered	NETTO WEIGHT 6 kg
	BOX VOLUME 0,35
	PCS PER BOX 1 pcs
	PCS PER CONTAINER 160 pcs



A-5170

beech
H 790 W 440 D 490 SH 460

SEAT veneer upholstered	NETTO WEIGHT 3,8 kg
	BOX VOLUME 0,31
	PCS PER BOX 2 pcs
	PCS PER CONTAINER 372 pcs



H-5170

beech
H 1065 W 440 D 475 SH 770 AH 1090

SEAT veneer upholstered	NETTO WEIGHT 5,5 kg
	BOX VOLUME 0,35
	PCS PER BOX 1 pcs
	PCS PER CONTAINER 160 pcs



A-6421

beech
H 810 W 415 D 485 SH 450

SEAT veneer upholstered	NETTO WEIGHT 3,5 kg
	BOX VOLUME 0,31
	PCS PER BOX 2 pcs
	PCS PER CONTAINER 372 pcs



A-9003

beech
H 810 W 510 D 545 SH 460

SEAT upholstered caned	NETTO WEIGHT 3,9 kg
STACKING 3 pcs	BOX VOLUME 0,31
	PCS PER BOX 2 pcs
	PCS PER CONTAINER 372 pcs



A-1230

beech
H 870 W 460 D 500 SH 460

SEAT
veneer
upholstered

NETTO WEIGHT
3,6 kg
BOX VOLUME
0,36
PCS PER BOX
2 pcs
PCS PER CONTAINER
330 pcs



H-1230

beech
H 1085 W 460 D 540 SH 770

SEAT
veneer
upholstered

NETTO WEIGHT
5,5 kg
BOX VOLUME
0,35
PCS PER BOX
1 pcs
PCS PER CONTAINER
160 pcs



MOON A-1260

beech
H 870 W 460 D 500 SH 460

SEAT
veneer
upholstered

NETTO WEIGHT
3,6 kg
BOX VOLUME
0,36
PCS PER BOX
2 pcs
PCS PER CONTAINER
330 pcs



MOON H-1260

beech
H 1085 W 460 D 540 SH 770

SEAT
veneer
upholstered

NETTO WEIGHT
5,5 kg
BOX VOLUME
0,35
PCS PER BOX
1 pcs
PCS PER CONTAINER
160 pcs



ANTILLA A-9850

Design Paged Design Team

beech

H 835 W 480 D 515 SH 450

SEAT
veneer
upholstered

NETTO WEIGHT
4,5 kg

BOX VOLUME
0,37

PCS PER BOX
2 pcs

PCS PER CONTAINER
288 pcs



ANTILLA B-9850

Design Paged Design Team

beech

H 835 W 570 D 515 SH 450 AH 670

SEAT
veneer
upholstered

NETTO WEIGHT
5 kg

BOX VOLUME
0,36

PCS PER BOX
1 pcs

PCS PER CONTAINER
140 pcs



ANTILLA C-9850

Design Paged Design Team

beech

H 780 W 460 D 350

SEAT
veneer

NETTO WEIGHT
4,3 kg

BOX VOLUME
0,18

PCS PER BOX
1 pcs

PCS PER CONTAINER
310 pcs



ANTILLA H-9850

beech

H 1105 W 480 D 490 SH 780

SEAT
veneer
upholstered

NETTO WEIGHT
5 kg

BOX VOLUME
0,35

PCS PER BOX
1 pcs

PCS PER CONTAINER
160 pcs



ANTILLA A-9880

Design Paged Design Team

beech

H 970 W 420 D 550 SH 450

SEAT
veneer
upholstered

NETTO WEIGHT
4,5 kg

BOX VOLUME
0,42

PCS PER BOX
2 pcs

PCS PER CONTAINER
286 pcs



YESTERDAY A-4100

Design Paged Design Team

beech

H 780 W 450 D 495 SH 475

SEAT
veneer
upholstered

NETTO WEIGHT
4,2 kg

BOX VOLUME
0,36

PCS PER BOX
2 pcs

PCS PER CONTAINER
330 pcs



YESTERDAY B-4100

Design Paged Design Team

beech

H 790 W 550 D 495 SH 475 AH 680

SEAT
veneer
upholstered

NETTO WEIGHT
6 kg

BOX VOLUME
0,33

PCS PER BOX
1 pcs

PCS PER CONTAINER
140 pcs



YESTERDAY H-4100

Design Paged Design Team

beech

H 1010 W 450 D 490 SH 780

SEAT
veneer
upholstered

NETTO WEIGHT
6,4 kg

BOX VOLUME
0,35

PCS PER BOX
1 pcs

PCS PER CONTAINER
160 pcs



XCHAIR 4 A-2094

Design Jadwiga Husarska-Sobina

beech

H 870 W 440 D 530 SH 460

SEAT
veneer

NETTO WEIGHT
4,9 kg

BOX VOLUME
0,31

PCS PER BOX
2 pcs

PCS PER CONTAINER
372 pcs



XCHAIR 4 A-2094

Design Jadwiga Husarska-Sobina

beech

H 880 W 440 D 530 SH 470

SEAT
upholstered

NETTO WEIGHT
4,9 kg

BOX VOLUME
0,31

PCS PER BOX
2 pcs

PCS PER CONTAINER
372 pcs



XSTOOL H-2090

Design Jadwiga Husarska-Sobina

beech

H 905 W 465 D 520 SH 750

SEAT
veneer

NETTO WEIGHT
3,8 kg

BOX VOLUME
0,31

PCS PER BOX
1 pcs

PCS PER CONTAINER
160 pcs



UVU A A-4350

Design Kinga Chmielarz-Hulak

beech

H 780 W 460 D 510 SH 470

SEAT
veneer
upholstered

NETTO WEIGHT
4,9 kg

BOX VOLUME
0,31

PCS PER BOX
2 pcs

PCS PER CONTAINER
372 pcs



UVU H H-4350

Design Kinga Chmielarz-Hulak

beech

H 1035 W 470 D 520 SH 800

SEAT
veneer
upholstered

NETTO WEIGHT
6,4 kg

BOX VOLUME
0,35

PCS PER BOX
1 pcs

PCS PER CONTAINER
160 pcs



A-4351

beech

H 790 W 455 D 510 SH 470

SEAT
veneer
upholstered

NETTO WEIGHT
4,9 kg

BOX VOLUME
0,31

PCS PER BOX
2 pcs

PCS PER CONTAINER
372 pcs



A-9231

beech
H 840 W 460 D 535 SH 475

SEAT veneer upholstered	NETTO WEIGHT 4,5 kg
STACKING 3 pcs	BOX VOLUME 0,37
	PCS PER BOX 2 pcs
	PCS PER CONTAINER 288 pcs



B-9231

beech
H 840 W 535 D 535 SH 475 AH 705

SEAT veneer upholstered	NETTO WEIGHT 4,9 kg
STACKING 3 pcs	BOX VOLUME 0,36
	PCS PER BOX 1 pcs
	PCS PER CONTAINER 140 pcs



H-9230

beech
H 1050 W 430 D 510 SH 785

SEAT veneer upholstered	NETTO WEIGHT 7,2 kg
	BOX VOLUME 0,35
	PCS PER BOX 1 pcs
	PCS PER CONTAINER 160 pcs



A-9448

beech
H 840 W 460 D 535 SH 495

SEAT upholstered	NETTO WEIGHT 5,4 kg
STACKING 3 pcs	BOX VOLUME 0,38
	PCS PER BOX 2 pcs
	PCS PER CONTAINER 288 pcs



B-9448

beech
H 840 W 535 D 535 SH 495 AH 705

SEAT veneer upholstered	NETTO WEIGHT 5,3 kg
STACKING 3 pcs	BOX VOLUME 0,36
	PCS PER BOX 1 pcs
	PCS PER CONTAINER 140 pcs



A-9490

beech
H 840 W 460 D 535 SH 475

SEAT upholstered	NETTO WEIGHT 5,1 kg
STACKING 3 pcs	BOX VOLUME 0,37
	PCS PER BOX 2 pcs
	PCS PER CONTAINER 288 pcs



B-9490

beech
H 840 W 535 D 535 SH 495 AH 705

SEAT upholstered	NETTO WEIGHT 5,5 kg
STACKING 3 pcs	BOX VOLUME 0,36
	PCS PER BOX 1 pcs
	PCS PER CONTAINER 140 pcs



DOMO A-9605

Design Paged Design Team

beech / oak
H 805 W 440 D 485 SH 450

SEAT veneer upholstered	NETTO WEIGHT 4 kg
STACKING 4 pcs	BOX VOLUME 0,31
	PCS PER BOX 2 pcs
	PCS PER CONTAINER 372 pcs



A-9705

beech
H 840 W 460 D 550 SH 475

SEAT veneer	NETTO WEIGHT 4,5 kg
STACKING 3 pcs	BOX VOLUME 0,37
	PCS PER BOX 2 pcs
	PCS PER CONTAINER 288 pcs



B-9705

beech
H 840 W 535 D 535 SH 475 AH 705

SEAT veneer upholstered	NETTO WEIGHT 5 kg
STACKING 3 pcs	BOX VOLUME 0,36
	PCS PER BOX 1 pcs
	PCS PER CONTAINER 140 pcs



H-9705

beech
H 1050 W 430 D 510 SH 785

SEAT veneer upholstered	NETTO WEIGHT 7,2 kg
	BOX VOLUME 0,35
	PCS PER BOX 1 pcs
	PCS PER CONTAINER 160 pcs



A-5550

beech
H 860 W 450 D 530 SH 450

SEAT veneer upholstered	NETTO WEIGHT 5,3 kg
	BOX VOLUME 0,31
	PCS PER BOX 2 pcs
	PCS PER CONTAINER 372 pcs



A-6620

beech
H 820 W 425 D 510 SH 460

SEAT veneer upholstered	NETTO WEIGHT	4,3 kg
	BOX VOLUME	0,31
	PCS PER BOX	2 pcs
	PCS PER CONTAINER	288 pcs



B-6620

beech
H 860 W 580 D 580 SH 460 AH 710

SEAT veneer upholstered	NETTO WEIGHT	5 kg
	BOX VOLUME	0,32
	PCS PER BOX	1 pcs
	PCS PER CONTAINER	150 pcs



AMETYST A-2000

Design Małgorzata Pękala

beech
H 835 W 425 D 520 SH 460

SEAT veneer upholstered	NETTO WEIGHT	4,6 kg
	BOX VOLUME	0,31
	PCS PER BOX	2 pcs
	PCS PER CONTAINER	372 pcs



AMETYST H-2000

Design Małgorzata Pękala

beech
H 1065 W 440 D 510 SH 760

SEAT veneer upholstered	NETTO WEIGHT	5,6 kg
	BOX VOLUME	0,35
	PCS PER BOX	1 pcs
	PCS PER CONTAINER	160 pcs



A-5200

beech

H 840 W 430 D 520 SH 460

SEAT
vener
upholstered
solid

NETTO WEIGHT
6 kg

BOX VOLUME
0,37

PCS PER BOX
2 pcs

PCS PER CONTAINER
288 pcs



B-5200

beech

H 840 W 525 D 520 SH 460 AH 670

SEAT
vener
upholstered
solid

NETTO WEIGHT
6,3 kg

BOX VOLUME
0,36

PCS PER BOX
1 pcs

PCS PER CONTAINER
140 pcs



H-5200

beech

H 1100 W 460 D 480 SH 760

SEAT
vener
upholstered
solid

NETTO WEIGHT
7 kg

BOX VOLUME
0,35

PCS PER BOX
1 pcs

PCS PER CONTAINER
160 pcs



A-5210

beech

H 840 W 430 D 520 SH 460

SEAT
vener
upholstered
solid

NETTO WEIGHT
6 kg

BOX VOLUME
0,37

PCS PER BOX
2 pcs

PCS PER CONTAINER
288 pcs



B-5210

beech
H 840 W 525 D 520 SH 460 AH 670

SEAT veneer upholstered solid	NETTO WEIGHT 6,3 kg BOX VOLUME 0,36 PCS PER BOX 1 pcs PCS PER CONTAINER 140 pcs
---	--



H-5210

beech
H 1100 W 460 D 480 SH 780

SEAT veneer upholstered solid	NETTO WEIGHT 7 kg BOX VOLUME 0,35 PCS PER BOX 1 pcs PCS PER CONTAINER 160 pcs
---	--



A-5245

beech
H 840 W 430 D 520 SH 480

SEAT veneer upholstered	NETTO WEIGHT 6 kg BOX VOLUME 0,42 PCS PER BOX 2 pcs PCS PER CONTAINER 286 pcs
--------------------------------------	--



B-5245

beech
H 840 W 525 D 520 SH 460 AH 670

SEAT veneer upholstered	NETTO WEIGHT 6,5 kg BOX VOLUME 0,36 PCS PER BOX 1 pcs PCS PER CONTAINER 140 pcs
--------------------------------------	--



H-5245

beech

H 1100 W 460 D 480 SH 790

SEAT
veneer
upholstered

NETTO WEIGHT
7 kg

BOX VOLUME
0,35

PCS PER BOX
1 pcs

PCS PER CONTAINER
160 pcs



A-5406

beech

H 855 W 490 D 490 SH 480

SEAT
upholstered

NETTO WEIGHT
6 kg

STACKING
3 pcs

BOX VOLUME
0,37

PCS PER BOX
2 pcs

PCS PER CONTAINER
288 pcs



B-5406

beech

H 855 W 530 D 490 SH 480 AH 700

SEAT
upholstered

NETTO WEIGHT
6,5 kg

STACKING
2 pcs

BOX VOLUME
0,36

PCS PER BOX
1 pcs

PCS PER CONTAINER
140 pcs



H-5206

beech

H 1100 W 430 D 520 SH 790

SEAT
upholstereds

NETTO WEIGHT
7,5 kg

BOX VOLUME
0,35

PCS PER BOX
1 pcs

PCS PER CONTAINER
160 pcs



A-5410

beech
H 855 W 490 D 490 SH 450

SEAT veneer upholstered	NETTO WEIGHT 6 kg
STACKING 3 pcs	BOX VOLUME 0,37
	PCS PER BOX 2 pcs
	PCS PER CONTAINER 288 pcs



B-5410

beech
H 855 W 530 D 490 SH 450 AH 700

SEAT veneer upholstered	NETTO WEIGHT 6,5 kg
STACKING 2 pcs	BOX VOLUME 0,36
	PCS PER BOX 1 pcs
	PCS PER CONTAINER 140 pcs



A-6500

beech
H 885 W 470 D 520 SH 455

SEAT upholstered solid	NETTO WEIGHT 9,5 kg
	BOX VOLUME 0,37
	PCS PER BOX 2 pcs
	PCS PER CONTAINER 288 pcs





A-4721

beech

H 855 W 420 D 500 SH 460

SEAT
vener
upholstered

NETTO WEIGHT
4,2 kg

BOX VOLUME
0,31

PCS PER BOX
2 pcs

PCS PER CONTAINER
372 pcs



H-4720

beech

H 1070 W 430 D 500 SH 770

SEAT
vener
upholstered

NETTO WEIGHT
5 kg

BOX VOLUME
0,35

PCS PER BOX
1 pcs

PCS PER CONTAINER
160 pcs



A-0039

beech

H 835 W 405 D 510 SH 450

SEAT
vener
upholstered

NETTO WEIGHT
4,2 kg

BOX VOLUME
0,31

PCS PER BOX
2 pcs

PCS PER CONTAINER
372 pcs



H-9927

beech

H 1130 W 490 D 460 SH 750

SEAT
vener
upholstered

NETTO WEIGHT
7,5 kg

BOX VOLUME
0,35

PCS PER BOX
1 pcs

PCS PER CONTAINER
160 pcs



H-9950

beech
H 1130 W 480 D 490 SH 790

SEAT upholstered	NETTO WEIGHT 6,6 kg
	BOX VOLUME 0,35
	PCS PER BOX 1 pcs
	PCS PER CONTAINER 160 pcs



A-5250

beech
H 870 W 440 D 520 SH 480

SEAT upholstered	NETTO WEIGHT 4,9 kg
	BOX VOLUME 0,37
	PCS PER BOX 2 pcs
	PCS PER CONTAINER 288 pcs



A-9201

beech
H 930 W 450 D 510 SH 500

SEAT upholstered	NETTO WEIGHT 7 kg
	BOX VOLUME 0,42
	PCS PER BOX 2 pcs
	PCS PER CONTAINER 286 pcs



H-9202

beech
H 1070 W 440 D 510 SH 800

SEAT vener upholstered	NETTO WEIGHT 7,3 kg
	BOX VOLUME 0,35
	PCS PER BOX 1 pcs
	PCS PER CONTAINER 160 pcs



A-4570

beech
H 840 W 475 D 540 SH 480

SEAT upholstered	NETTO WEIGHT 5 kg
	BOX VOLUME 0,37
	PCS PER BOX 2 pcs
	PCS PER CONTAINER 288 pcs



B-4570

beech
H 840 W 560 D 550 SH 480 AH 665

SEAT upholstered	NETTO WEIGHT 7 kg
	BOX VOLUME 0,36
	PCS PER BOX 1 pcs
	PCS PER CONTAINER 140 pcs



H-4570

beech
H 1120 W 490 D 500 SH 790

SEAT upholstered	NETTO WEIGHT 8 kg
	BOX VOLUME 0,35
	PCS PER BOX 1 pcs
	PCS PER CONTAINER 160 pcs



A-4578

beech
H 845 W 475 D 540 SH 48

SEAT upholstered	NETTO WEIGHT 5,3 kg
	BOX VOLUME 0,37
	PCS PER BOX 2 pcs
	PCS PER CONTAINER 288 pcs



B-4578

beech
H 845 W 560 D 550 SH 480 AH 665

SEAT upholstered	NETTO WEIGHT 8,7 kg
	BOX VOLUME 0,36
	PCS PER BOX 1 pcs
	PCS PER CONTAINER 140 pcs



A-0990

beech
H 920 W 460 D 540 SH 480

SEAT upholstered	NETTO WEIGHT 6 kg
	BOX VOLUME 0,37
	PCS PER BOX 2 pcs
	PCS PER CONTAINER 288 pcs



B-0990

beech
H 920 W 530 D 540 SH 480 AH 695

SEAT upholstered	NETTO WEIGHT 7 kg
	BOX VOLUME 0,36
	PCS PER BOX 1 pcs
	PCS PER CONTAINER 140 pcs



A-5281

beech

H 880 W 460 D 520 SH 480

SEAT
upholstered

NETTO WEIGHT
4,5 kg

BOX VOLUME
0,37

PCS PER BOX
2 pcs

PCS PER CONTAINER
288 pcs



B-5281

beech

H 880 W 520 D 520 SH 480 AH 700

SEAT
upholstered

NETTO WEIGHT
6 kg

BOX VOLUME
0,36

PCS PER BOX
1 pcs

PCS PER CONTAINER
140 pcs



H-5281

beech

H 1120 W 470 D 535 SH 790

SEAT
upholstered

NETTO WEIGHT
6,5 kg

BOX VOLUME
0,35

PCS PER BOX
1 pcs

PCS PER CONTAINER
160 pcs



A-0027

beech

H 835 W 425 D 530 SH 450

SEAT
vener
upholstered

NETTO WEIGHT
4,5 kg

BOX VOLUME
0,31

PCS PER BOX
2 pcs

PCS PER CONTAINER
372 pcs



B-0027

beech
H 835 W 520 D 530 SH 450 AH 700

SEAT veneer upholstered	NETTO WEIGHT 5,6 kg BOX VOLUME 0,36 PCS PER BOX 1 pcs PCS PER CONTAINER 140 pcs
--------------------------------------	--



H-0027

beech
H 1080 W 440 D 545 SH 750

SEAT veneer upholstered	NETTO WEIGHT 5,6 kg BOX VOLUME 0,36 PCS PER BOX 1 pcs PCS PER CONTAINER 160 pcs
--------------------------------------	--



A-0023

beech
H 830 W 425 D 540 SH 480

SEAT upholstered	NETTO WEIGHT 5,5 kg BOX VOLUME 0,36 PCS PER BOX 2 pcs PCS PER CONTAINER 330 pcs
----------------------------	--



H-0023

beech
H 1070 W 440 D 550 SH 790

SEAT upholstered	NETTO WEIGHT 6 kg BOX VOLUME 0,36 PCS PER BOX 1 pcs PCS PER CONTAINER 160 pcs
----------------------------	--



A-0010

beech
H 830 W 435 D 560 SH 480

SEAT upholstered	NETTO WEIGHT 6 kg
	BOX VOLUME 0,36
	PCS PER BOX 2 pcs
	PCS PER CONTAINER 330 pcs



B-0011

beech
H 830 W 520 D 560 SH 480 AH 700

SEAT upholstered	NETTO WEIGHT 7,1 kg
	BOX VOLUME 0,36
	PCS PER BOX 1 pcs
	PCS PER CONTAINER 140 pcs



H-0010

beech
H 1070 W 435 D 560 SH 790

SEAT upholstered	NETTO WEIGHT 6,7 kg
	BOX VOLUME 0,36
	PCS PER BOX 1 pcs
	PCS PER CONTAINER 160 pcs



A-0910

beech
H 830 W 435 D 560 SH 480

SEAT upholstered	NETTO WEIGHT 6,3 kg
	BOX VOLUME 0,36
	PCS PER BOX 2 pcs
	PCS PER CONTAINER 330 pcs



B-0911

beech
H 830 W 520 D 560 SH 480 AH 700

SEAT upholstered	NETTO WEIGHT 8 kg
	BOX VOLUME 0,36
	PCS PER BOX 1 pcs
PIPING on special request	PCS PER CONTAINER 140 pcs



B-9911

beech
H 845 W 600 D 565 SH 480 AH 700

SEAT upholstered	NETTO WEIGHT 9 kg
	BOX VOLUME 0,36
	PCS PER BOX 1 pcs
PIPING on special request	PCS PER CONTAINER 140 pcs



H-0910

beech
H 1070 W 435 D 560 SH 790

SEAT upholstered	NETTO WEIGHT 6,7 kg
	BOX VOLUME 0,35
	PCS PER BOX 1 pcs
PIPING on special request	PCS PER CONTAINER 160 pcs



H-0225

beech
H 1090 W 440 D 560 SH 820

SEAT upholstered	NETTO WEIGHT 7,6 kg
	BOX VOLUME 0,35
	PCS PER BOX 1 pcs
	PCS PER CONTAINER 160 pcs



VOGUE A-9440

Design Paged Design Team

beech

H 810 W 460 D 540 SH 480

SEAT upholstered	NETTO WEIGHT 6,8 kg
	BOX VOLUME 0,37
	PCS PER BOX 2 pcs
BUTTONS on special request	PCS PER CONTAINER 288 pcs



VOGUE M-9441

Design Paged Design Team

beech

H 770 W 600 D 630 SH 430

SEAT upholstered	NETTO WEIGHT 7,8 kg
	BOX VOLUME 0,40
	PCS PER BOX 1 pcs
BUTTONS on special request	PCS PER CONTAINER 153 pcs



VENTURA A-0461

Design Jadwiga Husarska-Sobina

beech

H 785 W 535 D 575 SH 430

SEAT upholstered	NETTO WEIGHT 8,6 kg
	BOX VOLUME 0,36
	PCS PER BOX 1 pcs
	PCS PER CONTAINER 140 pcs



VENTURA B-0461

Design Jadwiga Husarska-Sobina

beech

H 785 W 620 D 585 SH 430 AH 660

SEAT upholstered	NETTO WEIGHT 9,8 kg
	BOX VOLUME 0,37
	PCS PER BOX 1 pcs
	PCS PER CONTAINER 138 pcs



SWING A-0760

Design Jadwiga Husarska-Sobina

beech / oak

H 940 W 500 D 560 SH 500

SEAT
upholstered

NETTO WEIGHT
6,5 kg

BOX VOLUME
0,37

PCS PER BOX
1 pcs

PCS PER CONTAINER
144 pcs



MALACHIT A-2030

beech

H 850 W 450 D 560 SH 490

SEAT
upholstered

NETTO WEIGHT
6,3 kg

BOX VOLUME
0,37

PCS PER BOX
2 pcs

PCS PER CONTAINER
288 pcs



MALACHIT B-2030

beech

H 850 W 550 D 560 SH 490 AH 690

SEAT
upholstered

NETTO WEIGHT
7,5 kg

BOX VOLUME
0,36

PCS PER BOX
1 pcs

PCS PER CONTAINER
140 pcs



MALACHIT H-2030

beech

H 1065 W 450 D 540 SH 800

SEAT
upholstered

NETTO WEIGHT
7,5 kg

BOX VOLUME
0,35

PCS PER BOX
1 pcs

PCS PER CONTAINER
160 pcs



A-0042

beech
H 815 W 460 D 500 SH 480

SEAT upholstered	NETTO WEIGHT 6,4 kg
	BOX VOLUME 0,37
	PCS PER BOX 2 pcs
PIPING on special request	PCS PER CONTAINER 288 pcs



H-0042

beech
H 1115 W 500 D 530 SH 780

SEAT upholstered	NETTO WEIGHT 7,5 kg
	BOX VOLUME 0,35
	PCS PER BOX 1 pcs
PIPING on special request	PCS PER CONTAINER 160 pcs



A-0043

beech
H 815 W 460 D 500 SH 480

SEAT upholstered	NETTO WEIGHT 6,3 kg
	BOX VOLUME 0,37
	PCS PER BOX 2 pcs
	PCS PER CONTAINER 288 pcs



H-0043

beech
H 1115 W 500 D 530 SH 780

SEAT upholstered	NETTO WEIGHT 7,4 kg
	BOX VOLUME 0,35
	PCS PER BOX 1 pcs
	PCS PER CONTAINER 160 pcs



A-0045

beech
H 815 W 460 D 500 SH 480

SEAT upholstered	NETTO WEIGHT 6,5 kg
	BOX VOLUME 0,37
	PCS PER BOX 2 pcs
BUTTONS on special request	PCS PER CONTAINER 288 pcs



H-0045

beech
H 1115 W 500 D 530 SH 780

SEAT upholstered	NETTO WEIGHT 7,6 kg
	BOX VOLUME 0,35
	PCS PER BOX 1 pcs
BUTTONS on special request	PCS PER CONTAINER 160 pcs



A-0046

beech
H 815 W 460 D 500 SH 480

SEAT upholstered	NETTO WEIGHT 6,4 kg
	BOX VOLUME 0,37
	PCS PER BOX 2 pcs
	PCS PER CONTAINER 288 pcs



A-0048

beech
H 815 W 460 D 500 SH 480

SEAT upholstered	NETTO WEIGHT 6,5 kg
	BOX VOLUME 0,37
	PCS PER BOX 2 pcs
	PCS PER CONTAINER 288 pcs



H-0048

beech
H 1115 W 500 D 530 SH 780

SEAT upholstered	NETTO WEIGHT 7,6 kg
	BOX VOLUME 0,35
	PCS PER BOX 1 pcs
	PCS PER CONTAINER 160 pcs



ELIZABETH A-6100

beech
H 965 W 465 D 600 SH 485

SEAT upholstered	NETTO WEIGHT 7,5 kg
	BOX VOLUME 0,37
	PCS PER BOX 1 pcs
	PCS PER CONTAINER 144 pcs



ELIZABETH B-6100

beech
H 965 W 560 D 600 SH 485 AH 670

SEAT upholstered	NETTO WEIGHT 8 kg
	BOX VOLUME 0,45
	PCS PER BOX 1 pcs
	PCS PER CONTAINER 120 pcs



ELIZABETH H-6100

beech
H 1180 W 465 D 530 SH 760

SEAT upholstered	NETTO WEIGHT 8,7 kg
	BOX VOLUME 0,34
	PCS PER BOX 1 pcs
	PCS PER CONTAINER 160 pcs



A-0071

beech
H 810 W 515 D 560 SH 490

SEAT upholstered	NETTO WEIGHT 6,8 kg
	BOX VOLUME 0,37
	PCS PER BOX 2 pcs
PIPING on special request	PCS PER CONTAINER 288 pcs



B-0071

beech
H 810 W 590 D 610 SH 490 AH 675

SEAT upholstered	NETTO WEIGHT 10,3 kg
	BOX VOLUME 0,36
	PCS PER BOX 1 pcs
PIPING on special request	PCS PER CONTAINER 140 pcs



H-0071

beech
H 1110 W 590 D 600 SH 800 AH 970

SEAT upholstered	NETTO WEIGHT 11,5 kg
	BOX VOLUME 0,45
	PCS PER BOX 1 pcs
PIPING on special request	PCS PER CONTAINER 120 pcs



H-0072

beech
H 1080 W 430 D 540 SH 800

SEAT vener upholstered	NETTO WEIGHT 7,7 kg
	BOX VOLUME 0,35
	PCS PER BOX 1 pcs
PIPING on special request	PCS PER CONTAINER 160 pcs



B-3310

beech

H 830 W 660 D 650 SH 430 AH 575

SEAT
upholstered

NETTO WEIGHT
12,4 kg

BOX VOLUME
0,37

PCS PER BOX
1 pcs

PCS PER CONTAINER
138 pcs



B-5000

beech

H 825 W 460 D 540 SH 490

SEAT
upholstered

NETTO WEIGHT
8 kg

BOX VOLUME
0,31

PCS PER BOX
1 pcs

PCS PER CONTAINER
186 pcs



B-5001

beech

H 845 W 550 D 540 SH 480

SEAT
upholstered

NETTO WEIGHT
9 kg

BOX VOLUME
0,36

PCS PER BOX
1 pcs

PCS PER CONTAINER
140 pcs



C-0917

beech
H 780 W 345

SEAT veneer	NETTO WEIGHT 6 kg
STACKING 3 pcs	BOX VOLUME 0,17
	PCS PER BOX 1 pcs
	PCS PER CONTAINER 360 pcs



C-0919

beech
H 780 W 345

SEAT veneer	NETTO WEIGHT 5,9 kg
STACKING 3 pcs	BOX VOLUME 0,17
	PCS PER BOX 1 pcs
	PCS PER CONTAINER 360 pcs



C-3140

beech
H 740 W 320

SEAT veneer upholstered	NETTO WEIGHT 2,7 kg
STACKING 3 pcs	BOX VOLUME 0,17
	PCS PER BOX 1 pcs
	PCS PER CONTAINER 360 pcs



C-3141

beech
H 800 W 320

SEAT veneer upholstered	NETTO WEIGHT 3,3 kg
STACKING 3 pcs	BOX VOLUME 0,17
	PCS PER BOX 1 pcs
	PCS PER CONTAINER 360 pcs



C-4346

beech
H 460 W 370

SEAT
veneer
upholstered

NETTO WEIGHT
2,2 kg

BOX VOLUME
0,17

PCS PER BOX
2 pcs

PCS PER CONTAINER
720 pcs



C-4375

beech
H 750 W 370

SEAT
veneer
upholstered

NETTO WEIGHT
3 kg

BOX VOLUME
0,17

PCS PER BOX
2 pcs

PCS PER CONTAINER
360 pcs



C-4303

beech
H 800 W 370

SEAT
veneer
upholstered

NETTO WEIGHT
3,2 kg

BOX VOLUME
0,17

PCS PER BOX
2 pcs

PCS PER CONTAINER
360 pcs



C-4075

beech
H 810 W 450

SEAT
upholstered

NETTO WEIGHT
5 kg

BOX VOLUME
0,17

PCS PER BOX
1 pcs

PCS PER CONTAINER
360 pcs



C-2082

beech
H 760 W 365

SEAT veneer upholstered	NETTO WEIGHT 6,5 kg BOX VOLUME 0,17 PCS PER BOX 1 pcs PCS PER CONTAINER 360 pcs
--------------------------------------	--



C-3580

beech
H 760 W 450

SEAT veneer upholstered	NETTO WEIGHT 3,9 kg BOX VOLUME 0,17 PCS PER BOX 1 pcs PCS PER CONTAINER 360 pcs
--------------------------------------	--



C-4076

beech
H 780 W 470

SEAT veneer upholstered	NETTO WEIGHT 5,1 kg BOX VOLUME 0,17 PCS PER BOX 1 pcs PCS PER CONTAINER 360 pcs
--------------------------------------	--



C-0915

beech
H 820 W 350

SEAT upholstered	NETTO WEIGHT 6,5 kg BOX VOLUME 0,17 PCS PER BOX 1 pcs PCS PER CONTAINER 360 pcs
STACKING 3 pcs	
PIPING on special request	



ARGO

Design Jadwiga Husarska-Sobina, Klaudia Kasprzak

oak

H 760 W 1100 L 1100/1550

NETTO WEIGHT
45 kg

BOX VOLUME
0,22

PCS PER CONTAINER
260



COLLAB

Design Grzegorz Wit

oak

H 760 W 1050 L 2700

NETTO WEIGHT
130 kg

BOX VOLUME
0,48

PCS PER CONTAINER
100



K2 S-2220

Design Tomek Rygalik / Studio Rygalik

beech / oak

H 740 W 750 L 750

NETTO WEIGHT
14 kg

BOX VOLUME
0,24

PCS PER CONTAINER
240



K2 S-2221

Design Tomek Rygalik / Studio Rygalik

beech / oak

H 350 W 750

NETTO WEIGHT
10 kg

BOX VOLUME
0,24

PCS PER CONTAINER
240



PROP 80X80

Design Nikodem Szpunar

beech / oak
H 750 W 800 D 800

NETTO WEIGHT
18 kg

BOX VOLUME
0,08

PCS PER CONTAINER
725 pcs



PROP FI 80

Design Nikodem Szpunar

beech / oak
H 750 W 800 D 800

NETTO WEIGHT
15 kg

BOX VOLUME
0,08

PCS PER CONTAINER
725 pcs



PROP FI 60

Design Nikodem Szpunar

beech / oak
H 500 W 600 D 600

NETTO WEIGHT
9 kg

BOX VOLUME
0,05

PCS PER CONTAINER
1160 pcs



LOF S-4230

Design Tomek Rygalik / Studio Rygalik

beech / oak
H 750 W 800 L 800

NETTO WEIGHT
17 kg

BOX VOLUME
0,09

PCS PER CONTAINER
580 pcs



LOREM

Design Nikodem Szpunar

beech / oak

H 760 W 850 L 1250/1850

NETTO WEIGHT
44 kg

BOX VOLUME
0,19

PCS PER CONTAINER
300 pcs



TAG 1

Design Grzegorz Wit

oak

H 1100 W 600 L 600

NETTO WEIGHT
12 kg

BOX VOLUME
0,46

PCS PER CONTAINER
120

TAG 2

Design Grzegorz Wit

oak

H 870 W 600 L 600

NETTO WEIGHT
11 kg

BOX VOLUME
0,37

PCS PER CONTAINER
150

TAG 3

Design Grzegorz Wit

oak

H 750 W 600 L 600

NETTO WEIGHT
10 kg

BOX VOLUME
0,32

PCS PER CONTAINER
180



COFFEE TABLE-DUB

Design Tomek Rygalik / Studio Rygalik

oak
H 380 W 600 L 600

NETTO WEIGHT
9 kg
BOX VOLUME
0,16
PCS PER CONTAINER
360 pcs



S-K MODU

Design Husarska Design Studio, Anna Sanetra

beech / oak
H 445 W 505 L 505

NETTO WEIGHT
7 kg
BOX VOLUME
0,03
PCS PER BOX
1 pcs
PCS PER CONTAINER
1900 pcs



P-1042

beech
H 1870 W 665

NETTO WEIGHT
5 kg



P-1050

beech
H 1730 W 700

NETTO WEIGHT
3,7 kg

Wood finishes – beech water based stain / Bejce do drewna bukowego



100
natural beech



071
beech oak



007
light



046
rustical



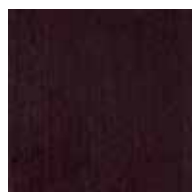
008
classic



014
cognac



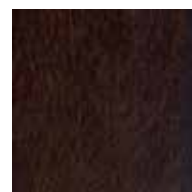
151
brown



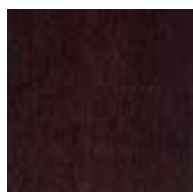
186
chocolate beech



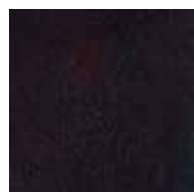
086
venge



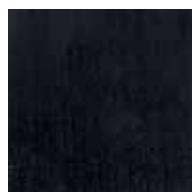
011
dark



031
walnut



109
tudor



141
venge



063
black



041
grey

Wood finish – oak water based stain / Bejca do drewna dębowego



100
natural oak

The sample is provided as a guide only. Therefore an exact match can not be guaranteed.

Próbki mają charakter poglądowy. Nie gwarantujemy idealnego odwzorowania kolorów w rzeczywistości.

Solid paint (lacquer) / Emalie



386 (Orange)



329



397 (Red chilli)



30S



32N



336 (Pinki)



385 (Matt purple)



312 (Sunflower)



355 (Lime)



31G



334



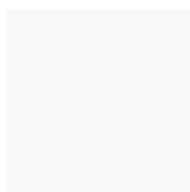
30T



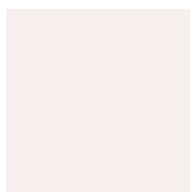
396 (Lazur)



32M



341 (White)



379 (Matt offwhite)



387



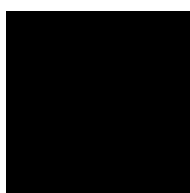
328



380 (Gloss grey)



394



342 (Black)

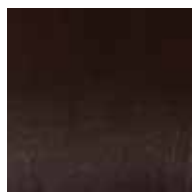
The sample is provided as a guide only. Therefore an exact match can not be guaranteed.

Próbki mają charakter poglądowy. Nie gwarantujemy idealnego odwzorowania kolorów w rzeczywistości.

Internal stripes / Paski wewnętrzne



Arctic



Black



Green



Red



Yellow

Samples of colour, other colours available on request.
Przykładowe kolory, inne kolory dostępne na żądanie.

Finish foil / Folia finisz

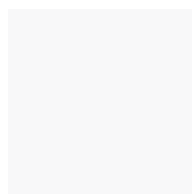


black newspaper



grey newspaper

Laminates / Laminaty



white

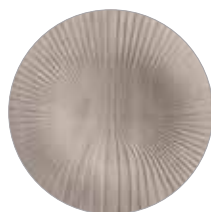


anthracite

Seat patterns / Wzory wytłoczeń

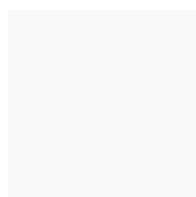


embossed
stripes

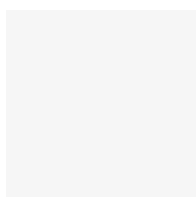


embossed
japanese sun

Finish foil / Folia finisz



F90 white



F01 white pearl



F14 cream



F12 lemon



F42 carrot



F04 orange



F02 red



F22 burgund



F61 pink



F21 light pink



F06 violet



F30 light blue



F03 blue



F37 navy blue



F55 spring green



F56 light green



F05 green



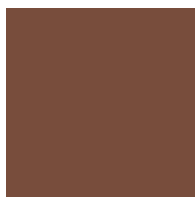
F57 bottle green



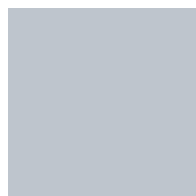
F43 chamois



F07 brown



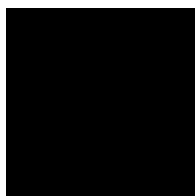
F75 chocolate



F80 light grey



F84 grey



F50 black



F81 silver



F11 golden

The sample is provided as a guide only. Therefore an exact match can not be guaranteed.

Próbki mają charakter poglądowy. Nie gwarantujemy idealnego odwzorowania kolorów w rzeczywistości.

model	name/nazwa	page str.	dimensions / wymiary						specifications / specyfikacja											
			height /wysokość	width /szerokość	depth /głębokość	seat height /wysokość siedziska	armrest height /wysokość podłokiet- ników	stacking /sztapowanie	netto weight /waga netto	brutto carton /waga brutto	pcs/inside box /volume 40' container load capacity/pcs	box volume / objętość kartonu	carton dimensions /wymiarzy kartonu	fabric wear classes for 1.4 m wide / zużycie tkaniny szer. 1.4 m						
														1 pc/ szt.	2 pcs/ szt.	4 pcs/ szt.	6 pcs/ szt.	10 pcs/ szt.	12 pcs/ szt.	100 pcs/ szt.
A-3702	HIP	19	800	500	510	480	-	7	17	2 pcs./310	0.37	590/620/1000	0.6	1.2	1.8	2.4	4.2	4.8	4.2	
B-3702	HIP	20	800	580	510	480	660	8	11	1 pc./220	0.26	525/600/825	0.6	1.2	1.8	2.4	4.2	4.8	4.2	
A-4420	ICHO	20	820	515	460	470	-	4.5	11	2 szt./280	0.33	600/600/930	-	-	-	-	-	-	-	
A-4420	ICHOlap	20	820	515	460	500	-	5	12	2 szt./244	0.4	600/600/1030	0.6	0.6	1.2	1.8	1.8	3	3.6	28
A-2220	K2	21	980	440	520	510	-	7.4	16.8	2 pcs./288	0.41	570/670/1070	1.7	2.2	3.5	5.5	8.5	9	8.5	
B-2220	K2	21	730	585	670	480	-	12	14	1 pc./153	0.37	720/720/770	2	2.5	4.5	7	7	9.5	70	
C-2220	K2	21	480	670	-	-	-	7.8	10	1 pc./153	0.37	720/720/770	2	2	3.5	5.6	7	7.5	65	
H-2220	K2	22	835	440	445	750	-	7	9	1 pc./186	0.28	470/670/980	1.7	1.7	2	2.7	4.8	5.8	48	
C-2225	K2	21	480	620	-	-	-	7.8	10	1 pc./153	0.37	720/720/770	2	2.6	5.2	7.2	13	15.6	130	
A-5035	K-3	22	850	480	535	480	-	6.5	15	2 pcs./288	0.34	520/720/1000	2	2	4	6	8	10	80	
A-2120	LINK	23	835	500	540	460	-	7	16	2 pcs./340	0.34	520/645/1020	0.6	0.6	1.2	1.8	3	3.6	32	
B-2120	LINK	23	835	500	540	460	660	7	10	1 pc./230	0.25	52/560/850	0.6	0.6	1.2	1.8	3	3.6	32	
A-4230	LOF	23	820	465	545	480	-	6	14	2 pcs./288	0.34	520/720/1000	0.7	0.7	1.4	2	3.3	4	33	
A-4231	LOF	24	820	460	545	480	-	6	14	2 pcs./288	0.34	520/720/1000	0.7	0.7	1.4	2	3.3	4	33	
A-4232	LOF	24	820	490	545	480	-	6	14	2 pcs./288	0.34	520/720/1000	0.7	0.7	1.4	2	3.3	4	33	
A-4234	LOF	-	820	460	545	460	-	6.5	15	2 pcs./288	0.34	520/720/1000	0.6	0.6	1.2	1.8	3	3.6	28	
A-4238	LOF	24	820	490	545	460	-	6.5	15	2 pcs./288	0.34	520/720/1000	0.6	0.6	1.2	1.8	3	3.6	28	
A-4239	LOF	24	820	465	545	460	-	6.5	15	2 pcs./288	0.34	520/720/1000	0.6	0.6	1.2	1.8	3	3.6	28	
A-4281	LOF	25	820	440	545	460	-	6	14	2 pcs./288	0.34	520/720/1000	0.7	0.7	1.4	2	3.3	4	33	
A-4282	LOF	25	820	440	545	480	-	6.5	15	2 pcs./288	0.34	520/720/1000	0.7	1.3	2.6	3.9	6.5	7.8	65	
LOREM	LOREM	25	850	462	513	465	-	5	13	2 pcs./380	0.30	465/680/960	0.6	1.2	3.5	5.8	5.8	5.8		
B-5005	LUBI	26	805	560	540	480	-	4.5	6.5	1 pc./140	0.33	620/620/950	2.7	5	7.5	11	17	20	165	
H-5005	LUBI	26	885	480	460	760	-	6.8	9	1 pc./144	0.34	520/720/1000	2	3	6	8.7	12	15	120	
A-MODU	MODU	26	880	450	580	490	-	9	11	1 pc./210	0.27	480/610/910	1.5	3	4.5	9	15	18	150	
B-MODU L	MODU	27	880	570	580	490	880	13	15	1 pc./170	0.33	600/610/910	2.5	5	10	15	25	30	250	
B-MODU P	MODU	27	880	570	580	490	880	13	15	1 pc./170	0.33	600/610/910	2.5	5	10	15	25	30	250	
B-MODU	MODU	27	880	720	580	490	745	14	16	1 pc./130	0.42	750/610/910	3.0	6	12	18	30	36	300	
A-4390	PRQP	28	825	445	570	465	-	5.2	12.5	2 pcs./288	0.37	520/720/1000	0.6	0.6	1.2	1.8	3	3.6	28	
B-4390	PRQP	28	825	600	585	465	670	6.8	8.8	1 pc./140	0.36	620/620/950	0.6	0.6	1.2	1.8	3	3.6	28	
C-4390	PRQP	29	780	505	460	-	-	5.7	7.7	1 pc./147	0.27	570/570/830	0.6	0.6	1.2	1.8	3	3.6	28	
H-4390	PRQP	29	1020	515	495	785	-	6.8	9	1 pc./160	0.35	520/570/1170	0.6	0.6	1.2	1.8	3	3.6	28	

model		name/nazwa		page słr.		dimensions / wymiary					armrest height / wysokość podłokiel- ników		stacking / sztapowanie		netto weight /waga netto		brutto weight carton /waga brutto		pcs inside box /volume 40' container load capacity pcs		box volume/ objętość kartonu		carton dimensions /wymiarzy kartonu		fabric wear classes for 1,4 m wide / zużycie tkaniny szer. 1,4 m											
						height /wysokość	width /szerokość	depth /głębokość	seat height / wysokość siedziska	armrest height / wysokość podłokiel- ników															netto weight /waga netto	brutto weight carton /waga brutto	pcs inside box /volume 40' container load capacity pcs	box volume/ objętość kartonu	carton dimensions /wymiarzy kartonu	1 pc/ szt.	2 pcs/ szt.	4 pcs/ szt.	6 pcs/ szt.	10 pcs/ szt.	12 pcs/ szt.	100 pcs/ szt.
AIRES	AIRES	12	770	580	550	465	-	-	7	10	1	0,3	1 szt./152	520/720/1000	1,5	2,9	5,65	8,7	14,5	16,9	145															
A-1070	ALDO	12	830	490	540	460	-	-	4,3	10,6	3	0,34	2 pcs/288	520/720/1000	-	-	-	-	-	-	-															
H-1070	ALDO	12	1060	480	510	780	-	-	5,3	7,3	-	0,32	1 pc/160	520/570/1170	-	-	-	-	-	-	-															
APRIL	APRIL	12	800	556	510	470	-	-	7	10	-	0,26	1 pc/440	520/600/830	1,5	2,6	5,2	7,8	13	13	135															
APRIL 2	APRIL 2	13	800	556	510	470	-	-	7	10	-	0,26	1 pc/440	520/600/830	1,5	2,6	5,2	7,8	13	13	135															
APRIL 3	APRIL 3	13	815	556	510	470	-	-	7	10	-	0,26	1 pc/440	520/600/830	1,5	2,6	5,2	7,8	13	13	135															
APRIL 4	APRIL 4	13	790	556	535	455	-	-	9	12	-	0,26	1 szt./160	520/600/830	1,5	2,6	5,2	7,8	13	13	135															
APRIL 5	APRIL 5	13	810-920	635	635	470-580	-	-	9	12	-	0,35	1 szt./120	590/640/940	1,5	2,6	5,2	7,8	13	13	15,6															
ARGO	ARGO	14	810	540	550	480	-	-	7	10	-	0,27	1 pc/210	570/580/830	1,9	2,5	4,5	7	11,5	14	115															
A-8130	BENKO	14	805	445	540	460	-	-	3	8	-	0,28	2 pcs/372	470/670/980	-	-	-	-	-	-	-															
B-8130	BENKO	14	805	615	530	460	-	-	6	8	-	0,33	1 pc/140	620/620/930	-	-	-	-	-	-	-															
A-4311	CORTE	14	780	430	490	460	-	-	4,5	11	3	0,31	2 szt./372	450/650/960	-	-	-	-	-	-	-															
A-4312	CORTE	15	775	430	490	460	-	-	4,5	11	3	0,31	2 szt./372	450/650/960	-	-	-	-	-	-	-															
A-4313	CORTE	15	775	430	490	460	-	-	4,5	11	3	0,31	2 szt./372	450/650/960	-	-	-	-	-	-	-															
H-4311	CORTE	15	1000	400	455	780	-	-	5	7	-	0,35	1 szt./160	500/550/1150	-	-	-	-	-	-	-															
H-4312	CORTE	15	1000	400	455	780	-	-	5	7	-	0,35	1 szt./160	500/550/1150	-	-	-	-	-	-	-															
H-4313	CORTE	16	1000	400	455	780	-	-	5	7	-	0,35	1 szt./160	500/550/1150	-	-	-	-	-	-	-															
DOT	DOT	16	840	460	560	480	-	-	5	13	-	0,36	2 pcs/136	525/700/970	1,2	2	3,7	5,5	9	11	90															
A-DUB	DUB	16	900	450	600	470	-	-	8	19	-	0,36	2 pcs/160	480/760/1000	0,65	1,3	2,6	3,9	6,5	7,8	65															
B-DUB	DUB	16	900	620	620	470	-	-	10	13	-	0,38	1 pc/150	640/640/930	0,65	1,3	2,6	3,9	6,5	7,8	65															
M-DUB	DUB	17	780	620	620	420	-	-	10	13	-	0,33	1 pc/170	640/640/810	0,65	1,3	2,6	3,9	6,5	7,8	65															
B-2940	EVO	17	775	580	540	460	-	-	4	6	-	0,33	1 pc/140	620/620/930	-	-	-	-	-	-	-															
B-2944 GT	EVO	18	790	580	550	460	-	-	4,5	6,5	-	0,33	1 pc/140	620/620/930	0,7	0,7	1,4	2	3,3	4	33															
B-2944 TT	EVO	18	790	580	550	500	-	-	4,5	6,5	-	0,33	1 pc/140	620/620/930	1,2	1,5	2,8	4,5	6,5	7,8	65															
B-2945	EVO	17	790	600	560	500	-	-	5,2	7	-	0,33	1 pc/140	620/620/930	1,8	3	6	9	16	18	160															
H-2940	EVO	18	950	570	560	760	-	-	5,7	7,5	-	0,41	1 pc/120	620/620/1170	-	-	-	-	-	-	-															
B-FUM 1	FUM	18	810	715	670	465	-	-	13	16	-	0,44	1 pc/130	700/750/830	2,9	5,8	10	15	25	30	250															
B-FUM 2	FUM	19	810	715	670	465	-	-	15	18	-	0,44	1 pc/130	700/750/830	3,2	6,4	12	17	29	34	290															
M-FUM	FUM	18	690	715	670	400	-	-	13	16	-	0,37	1 pc/150	700/750/710	3	6	11	16	27	32	270															
A-3701	HIP	19	800	500	510	445	-	-	6	15	-	0,31	2 pcs/370	520/620/930	-	-	-	-	-	-	-															
B-3701	HIP	19	800	580	510	445	-	-	7	10	-	0,26	1 pc/220	525/600/825	-	-	-	-	-	-	-															

specifications

model	name	page	dimensions				seat height	armrest height	stacking	netto weight	brutto weight carton	pcs inside 40' container load capacity	box volume	carton dimensions	fabric wear classics for 1,4 m wide					
			height	width	depth	height									weight	weight carton	box volume	carton dimensions	1 pc	2 pcs
A-0010		64	830	435	560	480	-	-	6	14	2 pcs./330	0,36	460/760/1030	1,7	2	3,6	5,5	8	9,6	80
H-0010		64	1070	435	560	790	-	-	6,7	9,7	1 pc./160	0,35	520/570/1170	1,7	2	3,6	5,5	8	9,6	80
B-0011		64	830	520	560	480	700	-	7,1	9,5	1 pc./140	0,36	620/620/950	1,7	2	3,6	5,5	8	9,6	80
A-0023		63	830	425	540	480	-	-	5,5	13	2 pcs./330	0,36	460/760/1030	1,7	1,7	2	2,5	4	5	40
H-0023		63	1070	440	550	790	-	-	6	8	1 pc./160	0,35	520/570/1170	1,7	1,7	2	2,5	4	5	40
A-0027		62	835	425	530	450	-	-	4,5	11	2 pcs./372	0,31	470/670/980	0,6	0,6	1,2	1,8	3	3,6	28
B-0027		63	835	520	530	450	700	-	5,6	8	1 pc./140	0,36	620/620/950	0,6	0,6	1,2	1,8	3	3,6	28
H-0027		63	1080	440	545	750	-	-	5,6	8	1 pc./160	0,35	520/570/1170	0,6	0,6	1,2	1,8	3	3,6	28
A-0039		58	835	405	510	450	-	-	4,2	10,5	2 pcs./372	0,31	470/670/980	0,6	0,6	1,2	1,8	3	3,6	28
A-0042		68	815	460	500	480	-	-	6,4	15	2 pcs./288	0,37	520/720/1000	1,7	2,9	5,2	7,8	13	15,6	120
H-0042		68	1115	500	530	780	-	-	7,5	9,5	1 pc./160	0,35	520/570/1170	1,7	2,9	5,2	7,8	13	15,6	120
A-0043		68	815	460	500	480	-	-	6,3	14,5	2 pcs./288	0,37	520/720/1000	0,6	0,6	1,2	1,8	3	3,6	28
H-0043		68	1115	500	530	780	-	-	7,4	9,5	1 pc./160	0,35	520/570/1170	0,6	0,6	1,2	1,8	3	3,6	28
A-0045		69	815	460	500	480	-	-	6,5	15	2 pcs./288	0,37	520/720/1000	1,5	2,5	4,5	6,6	11	13,2	100
H-0045		69	1115	500	530	790	-	-	7,6	9,5	1 pc./160	0,35	520/570/1170	1,5	2,5	4,5	6,6	11	13,2	100
A-0046		69	815	460	500	480	-	-	6,4	15	2 pcs./288	0,37	520/720/1000	1,5	1,5	3,7	4,8	7	8,4	70
H-0048		70	1115	500	530	790	-	-	7,6	9,5	1 pc./160	0,35	520/570/1170	1,7	2,5	4	5,5	8,5	10	85
A-0048		69	815	460	500	480	-	-	6,5	15	2 pcs./288	0,37	520/720/1000	1,7	2,5	4	5,5	8,5	10	85
H-0048		70	1115	500	530	790	-	-	7,6	9,5	1 pc./160	0,35	520/570/1170	1,7	2,5	4	5,5	8,5	10	85
A-0071		71	810	515	560	490	-	-	6,8	15,5	2 pcs./288	0,37	520/720/1000	2	3	5,5	8	12	15	115
B-0071		71	810	590	610	490	675	-	10,3	12	1 pc./140	0,36	620/620/950	2	3,6	7,2	11	19	22,5	187
H-0071		71	1110	590	600	800	970	-	7,7	9,7	1 pc./120	0,45	620/620/1170	2	3,6	7,2	11	19	22,5	187
H-0072		71	1080	430	540	800	-	-	11,5	13,5	1 pc./160	0,35	520/570/1170	2	3	5,5	8	12,5	15	123
H-0225		65	1090	440	560	820	-	-	7,6	10,5	1 pc./160	0,35	520/570/1170	1,7	2	3,6	5,5	8	9,6	80
A-0461	AVENTURA	66	785	535	575	430	-	-	8,6	10	1 pc./140	0,36	620/620/950	2,1	2,6	5	7,5	12,5	15	125
B-0461	B-VENTURA	66	785	620	585	430	660	-	9,8	11,5	1 pc./138	0,37	660/660/860	2,1	2,6	5	7,5	12,5	15	125
A-0760	A-SWING	67	940	500	560	500	-	-	6,5	8,5	1 pc./144	0,37	520/720/1000	1,7	2,6	5,5	8	12	14,5	120
A-0910		64	830	435	560	480	-	-	6,3	14,5	2 pcs./330	0,36	460/760/1030	1,7	2	4,2	6,5	10	11,5	87
H-0910		65	1070	435	560	790	-	-	6,7	9,7	1 pc./160	0,35	520/570/1170	1,7	2	4,2	6,5	10	11,5	87
B-0911		65	830	520	560	480	700	-	8	10	1 pc./140	0,36	620/620/950	1,7	2	4,2	6,5	10	11,5	87
C-0915		75	820	350	-	-	-	3	6,5	8,5	1 pc./360	0,17	420/420/950	1,5	1,5	1,5	3	4,6	5,5	40

model	name/nazwa	page str.	dimensions / wymiary					armrest height / wysokość podłokietników	stacking / sztapowanie	netto weight / waga netto	brutto carton weight / waga brutto	pcs/inside box / volume 40' container load capacity/pcs	box volume / objętość kartonu	carton dimensions / wymiary kartonu	fabric weat classes for 1.4 m wide / zużycie tkaniny szer. 1.4 m									
			height / wysokość	width / szerokość	depth / głębokość	seat height / wysokość siedziska	width / szerokość								depth / głębokość	1 pc / szt.	2 pcs / szt.	4 pcs / szt.	6 pcs / szt.	10 pcs / szt.	12 pcs / szt.	100 pcs / szt.		
																							width / szerokość	depth / głębokość
A-4395	PROP	28	825	445	570	500	-	-	6	14	2 pcs./288	0.37	520/720/1000	1.1	1.5	2.5	3.5	6	6	7	60			
B-4395	PROP	29	825	600	585	500	-	-	7.9	10	1 pc./140	0.36	620/620/950	1.1	1.5	2.5	3.5	6	6	7	60			
A-4390	PROP	28	825	445	570	465	-	-	5.2	12.5	2 szt./288	0.37	500/700/980	0.6	0.6	1.2	1.8	3	3	3.6	28			
B-4390	PROP	28	825	600	585	465	-	-	6.8	8.8	1 szt./140	0.36	600/600/930	0.6	0.6	1.2	1.8	3	3	3.6	28			
C-4390	PROP	29	780	505	460	-	-	-	5.7	7.7	1 szt./147	0.27	550/550/810	0.6	0.6	1.2	1.8	3	3	3.6	28			
H-4390	PROP	29	1020	515	495	785	-	-	6.8	9	1 szt./160	0.35	500/550/1150	0.6	0.6	1.2	1.8	3	3	3.6	28			
A-4395	PROP	28	825	445	570	500	-	-	6	14	2 szt./288	0.37	500/700/980	1.1	1.5	2.5	3.5	6	6	7	60			
B-4395	PROP	29	825	600	585	500	-	-	7.9	10	1 pc./140	0.36	600/600/930	1.1	1.5	2.5	3.5	6	6	7	60			
B-4398	PROP	29	825	600	585	500	-	-	7.9	10	1 pc./140	0.36	620/620/950	2	2.6	5	6.5	12	12	14.5	120			
B-3210	SEN	30	830	700	610	450	-	-	12	15	1 pc./140	0.39	720/850/630	3.5	5.5	11	16	26	26	32	260			
B-9820	SUDOKU	31	745	510	490	460	-	-	4.5	6.5	1 szt./147	0.27	550/550/810	-	-	-	-	-	-	-	-			
H-9820	SUDOKU	31	990	520	485	780	-	-	5.5	7.5	1 szt./160	0.35	500/550/1150	-	-	-	-	-	-	-	-			
A-8280	SWAN	31	825	470	570	480	-	-	4.5	11	2 pcs./288	0.37	520/720/1000	0.9	1.8	3.6	5.4	7	7	8.4	70			
A-8280	SWAN	31	825	580	570	480	-	-	5.3	7.3	1 pc./360	0.17	420/420/930	0.9	1.8	3.6	5.4	7	7	8.4	70			
A-2160	TOLO	32	815	550	490	460	-	-	4.8	11.5	2 pcs./244	0.4	620/620/1050	-	-	-	-	-	-	-	-			
H-2160	TOLO	32	1060	570	455	790	-	-	6.5	8.5	1 pc./120	0.41	620/620/1170	-	-	-	-	-	-	-	-			
A-2160	TOLO uph	32	795	550	490	480	-	-	5.3	12.5	2 pcs./244	0.4	620/620/1050	0.7	0.7	1.4	2	2	3.3	4	3.3			
H-2160	TOLO uph	32	1060	570	455	820	-	-	7	9	1 pc./120	0.41	620/620/1170	0.7	0.7	1.4	2	2	3.3	4	3.3			
TUK	TUK	33	820	574	565	480	-	-	8	10	1 pc./190	0.30	580/610/850	1.5	2.6	5.2	7.8	13	13	15.6	135			
TUK 2	TUK	33	820	574	565	480	-	-	8	10	1 pc./190	0.30	580/610/850	1.5	2.6	5.2	7.8	13	13	15.6	135			
TUK 3	TUK	33	835	574	565	480	-	-	8	10	1 pc./190	0.30	580/610/850	1.5	2.6	5.2	7.8	13	13	15.6	135			
TUK 4	TUK	33	810	560	550	440	-	-	10	12	1 szt./152	0.30	580/610/850	1.5	2.6	5.2	7.8	13	13	15.6	135			
TUK 5	TUK	34	825-935	580	600	455-565	-	-	10	12	1 szt./152	0.35	590/640/940	1.5	2.6	5.2	7.8	13	13	15.6	135			
BIG TUK	TUK	34	895	640	570	480	-	-	9	11	1 szt./120	0.35	590/640/940	1.5	2.9	5.8	9	15	18	18	150			
BIG TUK 4	TUK	34	895	640	570	440	-	-	10	13	1 szt./120	0.35	590/640/940	1.5	2.9	5.8	9	15	18	18	150			
BIG TUK 5	TUK	34	915-1025	640	600	460-570	-	-	10	13	1 szt./120	0.35	590/640/940	1.5	2.9	5.8	9	15	18	18	150			
A-2920	UXI	35	770	450	510	480	-	-	5.5	13	2 pcs./288	0.34	520/720/1000	0.6	0.6	1.2	1.8	3	3	3.6	28			
B-2920	UXI	35	770	530	530	480	-	-	8	10	1 pc./147	0.25	570/570/830	0.6	0.6	1.2	1.8	3	3	3.6	28			
H-2920	UXI	35	1080	530	565	790	-	-	6.8	8.8	1 pc./120	0.41	620/620/1170	0.6	0.6	1.2	1.8	3	3	3.6	28			
B-ZAP 1	ZAP	36	845	600	560	450	-	-	12	15	1 pc./170	0.33	590/640/880	2.1	4.2	8	12	19	23	23	190			
B-ZAP 2	ZAP	36	850	600	560	450	-	-	12	15	1 pc./170	0.33	590/640/880	3	6	10.5	16	26	26	32	260			
H-ZAP	ZAP	36	1180	600	560	780	-	-	15	17	1 pc./120	0.46	590/640/1220	2.1	4.2	8	12	19	23	23	190			

specifications

model	name	page	dimensions					stacking	netto weight	brutto weight carton	pcs inside box / volume 40' container lead capacity	box volume	carton dimensions	fabric wear classics for 1,4 m wide									
			height	width	depth	seat height	armrest height							1 pc	2 pcs	4 pcs	6 pcs	10 pcs	12 pcs	100 pcs			
C-3141		73	800	320	-	-	-	3	3,3	5,5	1 pc./360	0,17	420/420/950	0,5	0,5	1	1	2	2	2	17		
B-3310		72	830	660	650	430	575	-	12,4	15	1 pc./138	0,37	660/660/860	2,3	4	8	12	23	27	230			
C-3580		75	760	450	-	-	-	-	3,9	6	1 pc./360	0,17	420/420/950	0,5	0,5	1	1	2	2	2	17		
C-4075		74	810	450	-	-	-	-	5	7	1 pc./360	0,17	420/420/950	1,3	1,3	1,3	2	3	3	3,6	28		
C-4076		75	780	470	-	-	-	-	5,1	7	1 pc./360	0,17	420/420/950	0,6	0,6	1,2	1,8	3	3	3,6	20		
A-4100	AYESTERDAY	47	780	450	495	475	-	-	4,2	9	2 pcs./330	0,36	460/760/1030	0,6	0,6	1,2	1,8	3	3	3,6	28		
B-4100	BYESTERDAY	47	790	550	495	475	680	-	6	8	1 pc./140	0,36	620/620/950	0,6	0,6	1,2	1,8	3	3	3,6	28		
H-4100		47	1010	450	490	780	-	-	6,4	8,4	1 pc./160	0,35	520/570/1170	0,6	0,6	1,2	1,8	3	3	3,6	28		
C-4303		74	800	370	-	-	-	-	3,2	5	1 pc./360	0,17	420/420/950	0,5	0,5	1	1	2	2	2	17		
C-4346		74	460	370	-	-	-	-	2,2	6	2 pcs./720	0,17	420/420/950	0,5	0,5	1	1	2	2	2	17		
A-4350	AUVU	49	780	460	510	470	-	-	4,9	11	2 pcs./372	0,31	470/670/980	0,6	0,6	1,2	1,8	3	3	3,6	28		
H-4350	HUVU	49	1035	470	520	800	-	-	6,4	8	1 pc./160	0,35	520/570/1170	0,6	0,6	1,2	1,8	3	3	3,6	28		
A-4351		49	790	455	510	470	-	-	4,9	11	2 pcs./372	0,31	470/670/980	0,6	0,6	1,2	1,8	3	3	3,6	28		
C-4375		74	750	370	-	-	-	-	3	5	1 pc./360	0,17	420/420/950	0,5	0,5	1	1	2	2	2	17		
A-4570		60	840	475	540	480	-	-	5	12	2 pcs./288	0,37	520/720/1000	2	2	2	2,2	2,7	4	5	40		
B-4570		60	840	560	550	480	665	-	7	9,5	1 pc./140	0,36	620/620/950	2	2	2,2	2,7	4,8	5,5	48			
H-4570		60	1120	490	500	790	-	-	8	10	1 pc./160	0,35	520/570/1170	2	2	2	2,5	4	5	40			
A-4578		60	845	475	540	480	-	-	5,3	12,5	2 pcs./288	0,37	520/720/1000	2	2	2,5	3,8	6,5	7,5	66			
B-4578		61	845	560	550	480	665	-	8,7	10	1 pc./140	0,36	620/620/950	2	2	3	4,2	7,1	8,5	71			
H-4720		58	1070	430	500	770	-	-	6	8	1 pc./160	0,35	520/570/1170	0,6	0,6	1,2	1,8	3	3	3,6	28		
A-4721		58	855	420	500	460	-	-	4,2	10,5	2 pcs./372	0,31	470/670/980	0,6	0,6	1,2	1,8	3	3	3,6	20		
B-5000		72	825	460	540	490	-	-	8	10	1 pc./186	0,31	470/670/980	1,8	3	6	9	15	18	150			
B-5001		72	845	550	540	480	-	-	9	11	1 pc./140	0,36	620/620/950	2	3,5	6,5	10,5	14,5	20	165			
A-5170		44	790	440	490	460	-	-	3,8	10	2 pcs./372	0,31	470/670/980	0,6	0,6	1,2	1,8	3	3	3,6	28		
H-5170		44	1065	440	475	770	-	-	5,5	7,5	1 pc./160	0,35	520/570/1170	0,6	0,6	1,2	1,8	3	3	3,6	28		
A-5172		43	790	440	490	460	-	-	3,8	10	2 pcs./372	0,31	470/670/980	0,6	0,6	1,2	1,8	3	3	3,6	28		
B-5172		43	790	540	485	460	740	-	4,3	11	2 pcs./288	0,37	520/720/1000	0,6	0,6	1,2	1,8	3	3	3,6	28		
H-5172		43	1140	540	480	800	1090	-	6	8	1 pc./160	0,35	520/570/1170	0,6	0,6	1,2	1,8	3	3	3,6	28		
B-5182		43	825	550	520	460	740	-	4,7	12	2 pcs./280	0,36	620/620/950	0,6	0,6	1,2	1,8	3	3	3,6	28		
A-5200		54	840	430	520	460	-	-	6	14	2 pcs./288	0,37	520/720/1000	0,6	0,6	1,2	1,8	3	3	3,6	28		
B-5200		54	840	525	520	460	670	-	6,3	8,5	1 pc./140	0,36	620/620/950	0,6	0,6	1,2	1,8	3	3	3,6	28		

specifications

model	name	page	dimensions						stacking	netto weight	brutto weight carton	pcs inside box / volume 40' container load capacity	box volume	carton dimensions	fabric wear classics for 1,4 m wide									
			height	width	depth	seat height	armrest height	1 pc							2 pcs	4 pcs	6 pcs	10 pcs	12 pcs	100 pcs				
C-0917		73	780	345	-	-	-	3	6	8	1 pc./360	0.17	420/420/950	-	-	-	-	-	-	-	-			
C-0919		73	780	345	-	-	-	3	5,9	8	1 pc./360	0.17	420/420/950	-	-	-	-	-	-	-	-			
A-0990		61	920	460	540	480	-	-	6	14	2 pcs./288	0.37	520/720/1000	1.1	1.6	2.7	3.8	6.5	7.6	65				
B-0990		61	920	530	540	480	695	-	7	9	1 pc./140	0.36	620/620/950	1.1	1.6	2.7	3.8	6.5	7.6	65				
P-1042		79	1870	665	-	-	-	-	5	-	-	-	-	-	-	-	-	-	-	-	-			
P-1050		79	1730	700	-	-	-	-	3,7	-	-	-	-	-	-	-	-	-	-	-	-			
A-1230		45	870	460	500	460	-	-	3,6	9	2 pcs./330	0.36	460/760/1030	0.6	0.6	1.2	1.8	3	3.6	28				
H-1230		45	1085	460	540	770	-	-	5,5	7,5	1 pc./160	0.35	520/570/1170	0.6	0.6	1.2	1.8	3	3.6	28				
A-1260	AMMOON	45	800	450	480	460	-	-	3,6	9	2 pcs./372	0.31	470/670/980	0.6	0.6	1.2	1.8	3	3.6	28				
H-1260	H-MOON	45	1080	450	480	770	-	-	5,5	7,5	1 pc./160	0.35	520/570/1170	0.6	0.6	1.2	1.8	3	3.6	28				
B-1830		38	800	600	580	480	680	-	5	7	1 pc./360	0.17	420/420/950	1.4	1.8	3.6	5.2	7	8.4	70				
B-1834 GT		38	830	600	580	460	700	-	4,8	6,8	1 pc./360	0.17	420/420/950	0.7	0.7	1.4	2	3.3	4	33				
B-1834 TT		38	810	600	580	480	680	-	5,2	7,2	1 pc./360	0.17	420/420/950	1.2	1.5	2.8	4.5	6.5	7.8	65				
A-1840		39	880	420	530	460	-	-	3,1	8	2 pcs./372	0.31	470/670/980	0.6	0.6	1.2	1.8	3	3.6	28				
B-1840		39	820	600	580	460	700	-	4,3	6,3	1 pc./360	0.17	420/420/950	-	-	-	-	-	-	-				
B-1840 UPH			800	600	580	480	680	-	4,8	6,8	1 pc./360	0.17	420/420/950	0.7	0.7	1.4	2	3.3	4	33				
H-1840		39	1090	440	540	780	-	-	4,7	7	1 pc./160	0.35	520/570/1170	0.6	0.6	1.2	1.8	3	3.6	28				
A-1845		40	880	410	560	460	-	-	3,1	8	2 pcs./372	0.31	470/670/980	0.6	0.6	1.2	1.8	3	3.6	28				
A-1880		40	880	420	530	460	-	-	3,1	8	2 pcs./372	0.31	470/670/980	0.6	0.6	1.2	1.8	3	3.6	28				
B-1890		40	820	600	560	460	700	-	4,6	6,6	1 pc./360	0.17	420/420/950	-	-	-	-	-	-	-				
A-2000	AAMETYST	53	835	425	520	460	-	-	4,6	11,5	2 pcs./372	0.31	470/670/980	0.6	0.6	1.2	1.8	3	3.6	28				
H-2000	HAMETYST	53	1065	440	510	760	-	-	5,6	8	1 pc./160	0.35	520/570/1170	0.6	0.6	1.2	1.8	3	3.6	28				
A-2030	AMALACHIT	67	850	450	560	490	-	-	6,3	15	2 pcs./288	0.37	520/720/1000	0.8	1.4	2.8	4	7	8	77				
B-2030	B-MALACHIT	67	850	550	560	490	690	-	7,5	9,5	1 pc./140	0.36	620/620/950	0.8	1.4	2.7	4	7	8	77				
H-2030	H-MALACHIT	67	1065	450	540	800	-	-	7,5	9,5	1 pc./160	0.35	520/570/1170	0.8	1.4	2.7	4	7	8	77				
C-2082		75	780	370	-	-	-	-	6,5	8,5	1 pc./360	0.17	420/420/950	-	-	-	-	-	-	-				
H-2090	HXSTOOL	48	905	465	520	750	-	-	3,8	5	1 pc./160	0.31	470/670/980	-	-	-	-	-	-	-				
A-2094	AXCHAIR4	48	870	440	530	460	-	-	4,9	12	2 pcs./372	0.31	470/670/980	-	-	-	-	-	-	-				
A-2094	AXCHAIR4UPH	48	880	440	530	470	-	-	4,9	12	2 pcs./372	0.31	470/670/980	1.5	1.7	3.3	5	8	10	80				
C-3140		73	740	320	-	-	-	3	2,7	5	1 pc./360	0.17	420/420/950	0.5	0.5	1	1	2	2	17				

		specifications																		
model	name	page	dimensions				seat height	armrest height	stacking	netto weight	brutto weight carton	pcs inside box / volume 40' container load capacity pcs	box volume	carton dimensions	fabric wear classes for 1,4 m wide					
			height	width	depth	height									armrest height	1 pc	2 pcs	4 pcs	6 pcs	10 pcs
H-8291		42	1060	460	525	750	-	-	4,8	7	1 pc./160	0,35	520/570/1170	0,6	0,6	1,2	1,8	3	3,6	28
B-8292		42	820	500	510	460	680	-	4,2	6,5	1 pc./140	0,36	620/620/950	0,6	0,6	1,2	1,8	3	3,6	28
A-9003		44	810	510	545	460	-	3	3,9	10	2 pcs./372	0,31	470/670/980	0,6	0,6	1,2	1,8	3	3,6	28
A-9201		59	930	450	510	500	-	-	7	16	2sz./286	0,42	520/750/1070	1,7	1,7	2	2,5	4	5	40
H-9202		59	1070	440	510	800	-	-	7,3	9,5	1 pc./160	0,35	520/570/1170	1,7	1,7	2	2,5	4	5	40
H-9230		50	1050	430	510	785	-	-	7,2	9,5	1 pc./160	0,35	520/570/1170	0,6	0,6	1,2	1,8	3	3,6	28
A-9231	A-9238	50	840	460	535	475	-	-	4,5	11	2 pcs./288	0,37	520/720/1000	0,6	0,6	1,2	1,8	3	3,6	28
B-9231	B-9238	50	840	535	535	475	705	3	4,9	7	1 pc./140	0,36	620/620/950	0,6	0,6	1,2	1,8	3	3,6	28
A-9440	AVOQUE	66	810	460	540	480	-	-	6,8	15,5	2 pcs./288	0,37	520/720/1000	1,7	2,5	4	6,5	11	12	105
M-9441	SVOGUE	66	770	600	630	430	-	-	7,8	10	1 pc./153	0,4	720/720/770	1,7	3,3	6,5	10	16	19,5	161
A-9448		50	840	460	535	495	-	3	5,4	12,5	2 pcs./288	0,37	520/720/1000	0,6	0,6	1,2	1,8	3	3,6	28
B-9448		51	840	535	535	495	705	3	5,3	7,5	1 pc./140	0,36	620/620/950	0,6	0,6	1,2	1,8	3	3,6	28
A-9490		51	840	460	535	495	-	3	5,1	12	2 pcs./288	0,37	520/720/1000	1,2	1,8	3,6	5,4	7	8,4	70
B-9490		51	840	535	535	495	705	3	5,5	7,5	1 pc./140	0,36	620/620/950	1,2	1,8	3,6	5,4	7	8,4	70
A-9605	ADOMO	51	805	440	485	450	-	4	4	10	2 pcs./372	0,31	470/670/980	0,6	0,6	1,2	1,8	3	3,6	28
A-9705		52	840	460	550	475	-	3	4,5	11	2 pcs./288	0,37	520/720/1000	0,6	0,6	1,2	1,8	3	3,6	28
B-9705		52	840	535	535	475	705	3	5	7	1 pc./140	0,36	620/620/950	0,6	0,6	1,2	1,8	3	3,6	28
H-9705		52	1050	430	510	785	-	-	7,2	9,5	1 pc./160	0,35	520/570/1170	0,6	0,6	1,2	1,8	3	3,6	28
A-9850	AANTILLA	46	835	480	515	450	-	-	4,5	11	2 pcs./288	0,37	520/720/1000	0,6	0,6	1,2	1,8	3	3,6	28
B-9850	BANTILLA	46	835	570	515	450	670	-	5	7	1 pc./140	0,36	620/620/950	0,6	0,6	1,2	1,8	3	3,6	28
C-9850	CANTILLA	46	780	460	350	-	-	-	4,3	6,3	1 pc./310	0,18	420/500/840	-	-	-	-	-	-	-
H-9850	HANTILLA	46	1105	530	570	780	-	-	5	7	1 pc./160	0,35	520/570/1170	0,6	0,6	1,2	1,8	3	3,6	28
A-9880	AANTILLAL	47	970	420	550	450	-	-	4,5	11	2sz./286	0,42	520/750/1070	0,6	0,6	1,2	1,8	3	3,6	28
B-9911		65	845	600	565	480	700	-	9	11	1 pc./140	0,36	620/620/950	1,7	2,2	4,2	6,5	10	12,5	100
H-9927		58	1130	490	460	750	-	-	7,5	9,5	1 pc./160	0,35	520/570/1170	0,6	0,6	1,2	1,8	3	3,6	28
H-9950		59	1130	480	490	790	-	-	6,6	9	1 pc./160	0,35	520/570/1170	1,7	1,7	2	2,7	4,8	5,8	48

specifications

model	name	page	dimensions						stacking	netto weight	brutto weight carton	pcs inside box / volume 40' container load capacity	box volume	carton dimensions	fabric wear classics for 1,4 m wide					
			height	width	depth	seat height	armrest height	1 pc							2 pcs	4 pcs	6 pcs	10 pcs	12 pcs	100 pcs
H-5200		54	1100	460	480	760	-	-	7	9	1 pc./160	0,35	520/570/1170	0,6	0,6	1,2	1,8	3	3,6	28
H-5206		56	1100	430	520	790	-	-	7,5	9,5	1 pc./160	0,35	520/570/1170	0,6	1,5	2,5	3,5	5	6	50
A-5210		54	840	430	520	460	-	-	6	14	2 pcs./288	0,37	520/720/1000	0,6	0,6	1,2	1,8	3	3,6	28
B-5210		55	840	525	520	460	670	-	6,3	8,5	1 pc./140	0,36	620/620/950	0,6	0,6	1,2	1,8	3	3,6	28
H-5210		55	1100	460	480	760	-	-	7	9	1 pc./160	0,35	520/570/1170	0,6	0,6	1,2	1,8	3	3,6	28
A-5245		55	840	430	520	480	-	-	6	14	2sz./286	0,42	520/750/1070	0,6	0,6	1,2	1,8	3	3,6	28
B-5245		55	840	525	520	460	670	-	6,5	8,5	1 pc./140	0,36	620/620/950	0,6	0,6	1,2	1,8	3	3,6	28
H-5245		56	1100	460	480	790	-	-	7	9	1 pc./160	0,35	520/570/1170	0,6	0,6	1,2	1,8	3	3,6	28
A-5250		59	870	440	520	480	-	-	4,9	12	2 pcs./288	0,37	520/720/1000	1,7	1,7	2	2,7	4,8	5,8	48
A-5281		62	880	460	520	480	-	-	4,5	11	2 pcs./288	0,37	520/720/1000	0,6	0,6	1,2	1,8	3	3,6	28
B-5281		62	880	520	520	480	700	-	6	8	1 pc./140	0,36	620/620/950	0,6	0,6	1,2	1,8	3	3,6	28
H-5281		62	1120	470	535	790	-	-	6,5	8,5	1 pc./160	0,35	520/570/1170	0,6	0,6	1,2	1,8	3	3,6	28
A-5406		56	855	490	490	480	-	-	6	14	2 pcs./288	0,37	520/720/1000	0,6	1,5	2,5	3,5	5	6	50
B-5406		56	855	530	490	480	700	-	6,5	8,5	1 pc./140	0,36	620/620/950	0,6	1,5	2,5	3,5	5	6	50
A-5410		57	855	490	490	450	-	-	6	14	2 pcs./288	0,37	520/720/1000	0,6	0,6	1,2	1,8	3	3,6	28
B-5410		57	855	530	490	450	700	-	6,5	8,5	1 pc./140	0,36	620/620/950	0,6	0,6	1,2	1,8	3	3,6	28
A-5550		52	860	450	530	450	-	-	5,3	12,5	2 pcs./372	0,31	470/670/980	0,6	0,6	1,2	1,8	3	3,6	28
A-6100	A-ELIZABETH	70	965	465	600	485	-	-	7,5	9,5	1 pc./144	0,37	520/720/1000	1,5	2	3,5	5,5	8,3	9	83
B-6100	B-ELIZABETH	70	965	560	600	485	670	-	8	10	1 pc./122	0,4	620/620/1050	1,5	2	3,5	5,5	8,3	9	83
H-6100	HEILIZABETH	70	1180	465	530	760	-	-	8,7	11	1 pc./160	0,34	490/580/1210	1,5	2	3,5	5,5	8,3	9	83
A-6421		44	810	415	485	450	-	-	3,5	9	2 pcs./372	0,31	470/670/980	0,6	0,6	1,2	1,8	3	3,6	28
A-6500		57	885	470	520	455	-	-	9,5	21	2 pcs./288	0,37	520/720/1000	0,6	0,6	1,2	1,8	3	3,6	28
A-6620		53	820	425	510	460	-	-	4,3	11	2 pcs./372	0,31	470/670/980	0,6	0,6	1,2	1,8	3	3,6	28
B-6620		53	860	580	580	460	710	-	5	7	1 pc./150	0,32	610/600/890	0,7	0,7	1,4	2	3,3	4	33
A-8110		41	805	445	530	460	-	-	3	8	2 pcs./372	0,31	470/670/980	1	1,5	2,7	3,8	6,5	7,5	61
B-8110		41	805	505	530	460	700	-	5,5	7,5	1 pc./140	0,36	620/620/950	1	1,5	2,7	3,8	6,5	7,5	61
H-8110		41	1085	410	500	750	-	-	5	7	1 pc./160	0,35	520/570/1170	0,6	0,6	1,2	1,8	3	3,6	28
B-8250		41	1020	535	1010	520	650	-	9,6	12	1 pc./720	0,41	130/750/1000	-	-	-	-	-	-	-
A-8291		42	820	445	510	460	-	-	3,7	10	2 pcs./372	0,31	470/670/980	0,6	0,6	1,2	1,8	3	3,6	28
B-8291		42	820	500	510	460	680	-	4,2	6,5	1 pc./140	0,36	620/620/950	0,6	0,6	1,2	1,8	3	3,6	28

Paged Meble S.A. z siedzibą w Jasienicy informuje, iż z uwagi na procesy produkcyjne oraz technologiczne, jak również ze względu na strukturę drewna i oklein naturalnych posiadających zróżnicowane odcienie, kolorystykę, słoje i promienie rdzeniowe oraz rysunek w zależności od warunków siedliskowych drzewa, z którego zostały pozyskane, a także z uwagi na różnorodność partii towarowych mogą wystąpić różnice w odcieniach koloru poszczególnych mebli, nawet w przypadku zakupu kilku sztuk tego samego wyrobu, w ramach mebli z danej kolekcji mebli oferowanych przez Paged Meble S.A. z siedzibą w Jasienicy.

Paged Meble S.A. with its registered office in Jasienica hereby informs that due to the production processes and technologies as well as due to the structure of wood and natural veneers characterised by different shades, colours, rings, medullary rays and design depending on the habitat conditions of the tree from which they have been produced and because of the diversity of batches of goods, there may be certain differences in the shades of colours of particular pieces of furniture even in case of purchasing several pieces of the same product from a given furniture collection offered by Paged Meble S.A. with its registered office in Jasienica."

Niniejszy katalog ma charakter wyłącznie informacyjny i nie stanowi oferty w rozumieniu ustawy Kodeks cywilny z dnia 23.04.1964 r. (Dz. U. 2014 r. poz. 121). Z uwagi na ograniczenia wynikające z techniki druku, kolory zamieszczone w niniejszym katalogu mogą się różnić od rzeczywistych kolorów oferowanych mebli. Artykuły dekoracyjne prezentowane na zdjęciach aranżacyjnych stanowią jedynie dekorację i nie są oferowane przez Paged Meble S.A. z siedzibą w Jasienicy do sprzedaży. Wszystkie dane i informacje zawarte w katalogu należy traktować jako aktualne w miesiącu kierowania katalogu do druku (tj. wrzesień 2018 r.). Wymiary zostały zaokrąglone do pełnych centymetrów.

This catalogue is for informational purposes only and does not constitute an offer within the meaning of the Civil Code Act of Dz. U. 2014 r. poz. 121. Due to the limitations of printing technology, the colors shown in this catalogue may differ from the actual colors of furniture. Decorative items shown in the pictures are merely decoration arrangement and are not offered for sale by Paged Meble SA with headquarters in Jasienica. All data and information in this catalog should be consider binding in the month of printing (September 2018). Dimensions have been rounded to the nearest centimeters.



www.paged.pl

Paged Meble SA
ul. Cieszyńska 99, Jasionica
Poland
tel.: +48 33 497 24 00
jasienica@paged.pl